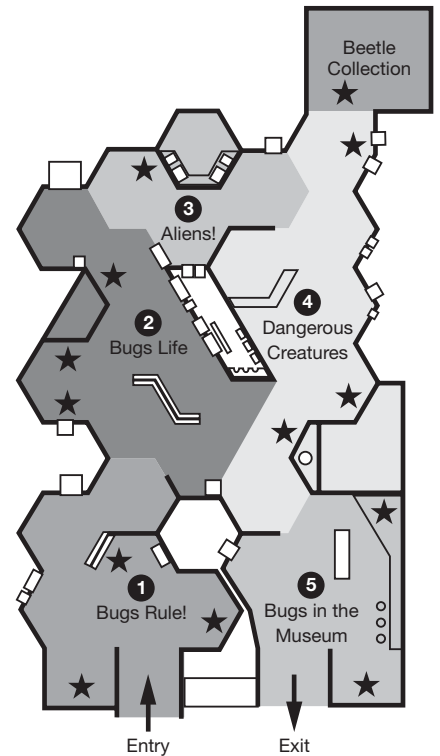
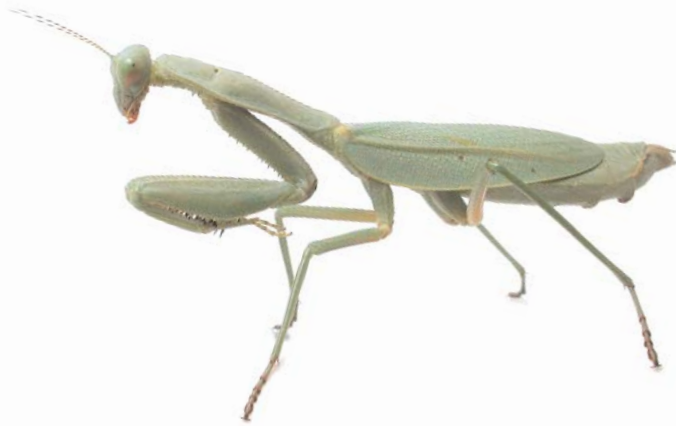


Bugs Alive!



Early Years Trail

Teachers and Carers: These questions could be used as a basis for discussion while visiting the exhibition.

1. Bugs Rule!

- ★ Just inside the exhibition entrance there are models of insects overhead that lived millions of years ago. What sort of insects were they?
- ★ Find the big beetle model. What is special about beetles' wings?
- ★ Look at the trays of insect specimens. Which insects are the most colourful / smallest / most interesting?



2. A Bug's Life

- ★ Go to the bull ants' nest. Give yourself a tick when you have found:
 - a worker ant
 - an ant with wings
 - an ant egg
 - an ant larva (grub)
- ★ Find the Spiny Leaf Insects and stick insects. How many Spiny Leaf Insects can you see? Read the Stick Insect Family Album.
- ★ Smell the stick insect poo. Can you work out what stick insects eat?





3. Aliens!

- ★ Find the tarantulas. They look scary, but are they really dangerous?
- ★ Go to the big collection of beetles. Spend some time admiring them.

4. Dangerous Creatures?

- ★ Find the Red-back Spiders.
Where are these spiders commonly found?



Draw one of the females. Show its markings.

- ★ Go to the orb-weaver spiders.

Draw one of their beautiful webs.

- ★ Find the Crawl-through Meat Ants' Nest.
Choose an ant in this exhibit. Watch where it goes and what it does.

5. Bugs in the Museum

- ★ Find the section entitled 'Field Collecting'.
How do scientists catch insects with pitfall traps?
- ★ Go to the section entitled 'The Hall of Fame'.
Which do you think is the most amazing insect in this exhibit?

