

People in Museum Victoria

Corporate Governance

The Museums Board of Victoria

Museum Victoria is governed by the Museums Board of Victoria, a statutory body established under the Museums Act 1983. It consists of a maximum of eleven members appointed for a three-year term (for a maximum of three terms) by the Governor-in-Council and subject to the direction and control of the Victorian Minister for the Arts.

The Board is directly accountable to the Government of Victoria, through the Minister for the Arts, and works closely with Arts Victoria to deliver policy objectives.

Role

The Museums Board of Victoria is responsible for the good management of Museum Victoria and has the following functions.

- To control, manage, operate, promote, develop and maintain Museum Victoria.
- To control, manage, operate, promote, develop and maintain the Exhibition land as a place for the holding of public exhibitions and for the assembly, education, instruction, entertainment or recreation of the public.
- To develop and maintain the State collections of natural sciences, indigenous culture, social history and science and technology.
- To exhibit material from those collections for the purposes of education and entertainment.

- To promote use of those collections for scientific research.
- To promote the use of Museum Victoria's resources for education in Victoria.
- To research, present and promote issues of public relevance and benefit.
- To act as a repository for specimens upon which scientific studies have been made or which may have special cultural or historical significance.
- To provide leadership to museums in Victoria.
- To advise the Victorian Minister for the Arts on matters relating to museums, and co-ordination of museum services in Victoria.

MEMBERS

President

Professor David Penington AC

MA DM(Oxon) LLD(Hon) FRCP
FRACP FRACPA

Appointed 1994.

David is the former Vice Chancellor of the University of Melbourne, with strong interests in the processes and outcomes of science, particularly bio-medical science. In 1988 he was appointed a Companion of the Order of Australia, for services to medicine and to the community. He has often been called upon by government to conduct major enquiries and investigations, notably as Chairman of the Commonwealth's AIDS Taskforce in the 1980s, and Chairman of the Victorian Premier's Advisory Council on Illicit Drugs in 1995/96 and Victoria's Drug Policy Expert Committee in 1999/00.

Treasurer

Mr Ian Sinclair

FCA

Appointed 1985. Term concluded at the end of June 2001 after serving as Treasurer over a period spanning 17 years.

A chartered accountant and former partner of Ernst & Young, Ian has long provided advice and expertise as the Board's Treasurer. Ian served as the Board's representative on the State Government's former Museums Advisory Board for some years, and has an in depth understanding of the Victorian museum community. He is Chairman and Director of a number of boards, and has been a member of the Australian Biological Resources Study Committee and a Councillor of the Institute of Chartered Accountants in Australia.

Mr Terry Garwood

Diploma of Arts GradDipEd
(Secondary)

Appointed 1997.

Terry was Director of Aboriginal Affairs Victoria for seven years, concluding at the end of 1996, and has long been involved with Museum Victoria, especially in the area of indigenous communities and culture. Now a Regional Director of the Department of Human Services, he also serves as the Chair of the Board's Aboriginal Cultural Heritage Advisory Committee and is a member of Victoria's Centenary of Federation Committee. Terry has a keen interest in Aboriginal community development issues, particularly with respect to cultural heritage and economic development. Terry is a Life Member of the Koorie Heritage Trust, and a member of the



Committee of Management of the
Aborigines Advancement League Inc.
and the Aboriginal Advisory
Committee of Diversity @ Work.

Professor Jennifer Graves

BSc (Hons) MSc PhD
Appointed 1999.

Jennifer gained her qualifications in
genetics and molecular biology at
the University of Adelaide and the
University of California, Berkeley.
Currently a Professor at the Australian
National University, she is also

a Research Fellow of the New
Opportunities in Animal Health
Sciences Centre for animal
conservation and reproduction at
the Smithsonian Institution and a
Fellow of the Australian Academy
of Science. A member of numerous
scientific societies and panels, she
has also contributed to her research
field of mammalian genome evolution
through the publication of over two
hundred research papers.

*Members of the Museums Board of Victoria
in front of the Blue Whale skeleton,
Melbourne Museum.*

*From left to right:
Peter Hiscock AM, Tina McMeckan,
Ian Sinclair, Terry Garwood,
Sheila O'Sullivan, David Penington AC,
Geoffrey Opat, Bob Weis.
Absent: Deanne Weir, Jennifer Graves,
Janet McCalman.*

Museums Board of Victoria

Mr Peter Hiscock AM

FCPA FCIS

Appointed 1996.

As the Director of Sovereign Hill, Ballarat, Peter has had a long and highly respected career in the management and development of regional tourism and museums. He is a former Chairman of the Victorian Tourism Commission and the Museums Advisory Board, and is in constant demand by government and other bodies for his advice and counsel. He chairs the Immigration and Hellenic Museums Committee and is also Vice Chair of the Heritage Council in Victoria. An accountant by profession, Peter spent 15 years with Petersville Ltd in both financial and general management positions.

Associate Professor Janet McCalman

BA PhD FAHA

Appointed 2000.

Janet is Reader in both the Department of History and Philosophy of Science and in the Centre for the Study of Health and Society at the University of Melbourne. She has published widely in Australian and British social history and has won a number of literary and scholarly awards, including the Australian Academy of the Humanities' inaugural Max Crawford Medal. She writes a regular column in *The Age*.

Ms Tina McMeckan

BSc MBA (Melb) FAICD

Appointed 1999.

Tina is a business and financial consultant and company director with extensive experience in establishing new businesses, strategy and business planning, capital raising and corporate governance. She is presently involved in the energy and tourism industries. Tina holds non-executive directorships at Snowy Hydro Trading and the Zoological Parks and Gardens Board and is an Executive Director of Riverside Australia.

Professor Geoffrey Opat

BSc PhD FAA FAIP FAAS

Appointed 1998. Term concluded at the end of June 2001.

Geoffrey gained his BSc and his PhD at the University of Melbourne. Over a long and distinguished research career he has published over one hundred theoretical and experimental papers on questions of fundamental and applied physics. He is a Fellow of the Australian Academy of Science and has received the Australian Institute of Physics Boas Medal for his research on neutron interferometry. He is well known for his interests in science education and in communicating science to children and the general public.

Ms Sheila O'Sullivan

BA FPRIA

Appointed 2000.

Sheila is the Chairman of Socom Response Public Relations. Her work spans a broad range of issues within the community, often at the interface between government, the community and the private sector. Sheila has won numerous Public Relations Institute of Australia awards for her work, and has also served as a member of many advisory bodies including the Administrative Review Council and the Ministerial Advisory Council of the Arts (Victoria).

Ms Deanne Weir

BA (Hons) LLB (Hons) LLM

Appointed 1998. Resigned February 2001.

Deanne has been a corporate lawyer with Telstra since 1992 and is an expert in telecommunications, competition and commercial law. Formerly Telstra's Regulatory and Competition Counsel, Deanne resigned from the Board when she took up the position of Director Corporate Development for TelstraSaturn. In 1995 Deanne was awarded the Britain-Australia Commercial Law Scholarship which enabled her to complete a Masters Degree in Commercial and Corporate Law at the University of London. Deanne was founding Convenor of the Victorian Women Lawyers' Association and an adviser to the Board of the Australian Women Lawyers' Association. In 1998 Deanne was the inaugural winner of the Australian Corporate Lawyers' Association's "Young Achiever of the Year" award.

Mr Bob Weis

BA

Appointed 1998.

Bob is the Director of Generation Films and has been producer and executive producer of feature films and television programs in Australia, Europe and the United States of America. His productions have won many awards, including the United Nations Media Peace Prize, Australian Film Institute, Logie and Penguin awards. Bob was Chairman of the Australian Film Institute and President of the Screen Producers Association of Australia, a Council member of the Australian Film, TV and Radio School, a Board member of Film Victoria and is currently Chairman of the Australian Art Orchestra.

ATTENDANCE AT MEETINGS

Member	Museum Board of Victoria	Finance and Audit Committee	Nominations and Remuneration Committee	Aboriginal Cultural Heritage Advisory Committee
Professor David Penington AC	10		6	
Mr Ian Sinclair	7	10		
Mr Terry Garwood	8			7
Professor Jennifer Graves	7			
Mr Peter Hiscock AM	9		5	
Dr Janet McCalman	9			
Ms Tina McMeckan	10	9		
Professor Geoffrey Opat	9			
Ms Sheila O'Sullivan	7			
Ms Deanne Weir	2		2	
Mr Bob Weis	9	8		5
Total number of meetings	10	11	6	10

Note: Ms Deanne Weir resigned from the Museum Board of Victoria in February.

COMMITTEES

The Board has established a number of standing and advisory committees under the *Museum Act 1983*.

Standing Committees

Finance and Audit Committee: assists the Board in fulfilling its responsibilities with regard to financial management, accounting and reporting practices as prescribed by the *Museum Act 1983*.

Members

Mr Ian Sinclair (Chair)
Ms Tina McMeckan
Mr Graham Cunningham
Mr Bob Weis
Ms Sally Sinton

Nominations and Remuneration Committee

Committee: responsible for advising the Board on all staffing matters.

Aboriginal Cultural Heritage Advisory Committee

Committee: responsible for advising the Board on all matters relevant to Aboriginal cultural heritage. The members of the Committee include representatives of Aboriginal communities throughout Victoria, as listed in the *Aboriginal and Torres Strait Islander Heritage Protection Amendment Act 1987, Part 2(a)*.
Donald Thomson Collection

Administration Committee:

established to administer the legal agreement between The University of Melbourne, Mrs Dorita Thomson and Museum Victoria for the placement on long-term loan of the Donald Thomson Collection at Museum Victoria.

Regional and Specialist Museum Advisory Committee: responsible for advising the Minister on matters relating to museums and the coordination of museum services, to stimulate collaborative approaches and provide leadership to museums in Victoria.

Thomas Ramsay Science and Humanities Committee: responsible for the awarding of the Thomas Ramsay Science and Humanities Fellowship and conducting the Crosbie Morrison Memorial Lecture.

Advisory Committees

Museum Project Control Group: responsible for planning and implementation of Museum Victoria major projects.

Development and Marketing Committee:

responsible for advising the Board and staff on issues in relation to development and fundraising.

Immigration and Hellenic Museum Committee:

responsible for providing advice to the Board on the ongoing programming and management of the Immigration Museum. The Committee provides advice on all matters relevant to the interpretation of the migration experience and issues of cultural diversity.

Technology and Information Committee:

responsible for advising the Board on information management, technology and multimedia utilisation throughout Museum Victoria.

Research Committee: responsible for advising the Board on strategic matters relating to research and collection development, and oversees the implementation of the Board's Research Strategy



The Museum Victoria Executive Management Team in the Forest Gallery, Melbourne Museum.

*From left to right:
George MacDonald, Robin Hirst,
Gerardine Kerlin, Martin Hallett,
Gaye Hamilton, James Dexter,
Padmini Sebastian, Joseph Corponi,
Timothy Hart.*

Executive Management Team

Executive Management Team

Chief Executive Officer, Museum Victoria and Director, Melbourne Museum

George F. MacDonald
BA PhD LId FRSC FRSA
Appointed October 1998, commenced February 1999.

Responsible for providing leadership of, and being accountable for, the operations of Museum Victoria, and the launching of one of the world's finest museum organisations.

George MacDonald will leave Museum Victoria in October 2001. Martin Hallett will be Acting CEO until a new Chief Executive Officer is appointed.

Deputy Chief Executive Officer and Director Regional Services

Martin Hallett BAgSci MAgrSci DipEd
Appointed May 2000.

Oversees the Immigration Museum as well as the Division of Outreach, Technology and Information Services and Multimedia which provides information technology infrastructure and services for Museum Victoria and outreach services to the community. Also, provides executive support to the Board's Regional and Specialist Museums Advisory Committee.

Director, Corporate Services

Joseph Corponi BBus GradDipCDP
Appointed 1993.

Responsible for the provision of financial, human resources and property services, development of policy, maintaining a risk free environment for staff and visitors, and ensuring the effective and efficient management of Museum Victoria's resources and assets.

Assistant Director, Melbourne Museum

James Dexter BA DipEd
Appointed January 1997.

Responsible for the development and operation of Melbourne Museum's education and public activity programs, customer services, commercial facilities, campus marketing, the management of exhibitions as well as the operations of all public areas of Melbourne Museum. Also responsible for the management and development of the Royal Exhibition Building.

Director, Scienceworks Museum

Gaye Hamilton BSc(Ed)
Appointed October 1996.

Responsible for the continuing development of Scienceworks Museum (incorporating the Melbourne Planetarium and Spotswood Pumping Station) as a vigorous and viable campus of Museum Victoria. This includes emphasis on increased participation by new and existing audiences across an ever-changing range of activities offered by Scienceworks, on and off site. Also responsible for liaison with the Victorian Department of Education and Catholic Education Office for the provision of extension education services throughout Museum Victoria.

Director, Outreach, Technology, Information and Multimedia

Timothy Hart BSc Arch -
Archaeology (Hons)
Appointed May 2001.

Responsible for Museum Victoria's information technology and information management infrastructure and systems, web site and digital publishing activities. Also the development and management of the Museum's multimedia networks including the multimedia management system, the Immersion Cinema Experience (ICE) Theatre, and physical outreach activities to metropolitan and regional communities.

Director, Programs Research and Collections

Robin Hirst BSc(Hons) PhD DipEd
Appointed August 1999.

Responsible for the Museum's Research Program and the development, management and conservation of the collections. The position is responsible for the development of Museum Victoria exhibitions and the production of planetarium shows, on-line content and other public programs.

Director, Museum Development

Gerardine Kerlin BA(Hons)
Appointed August 2000.

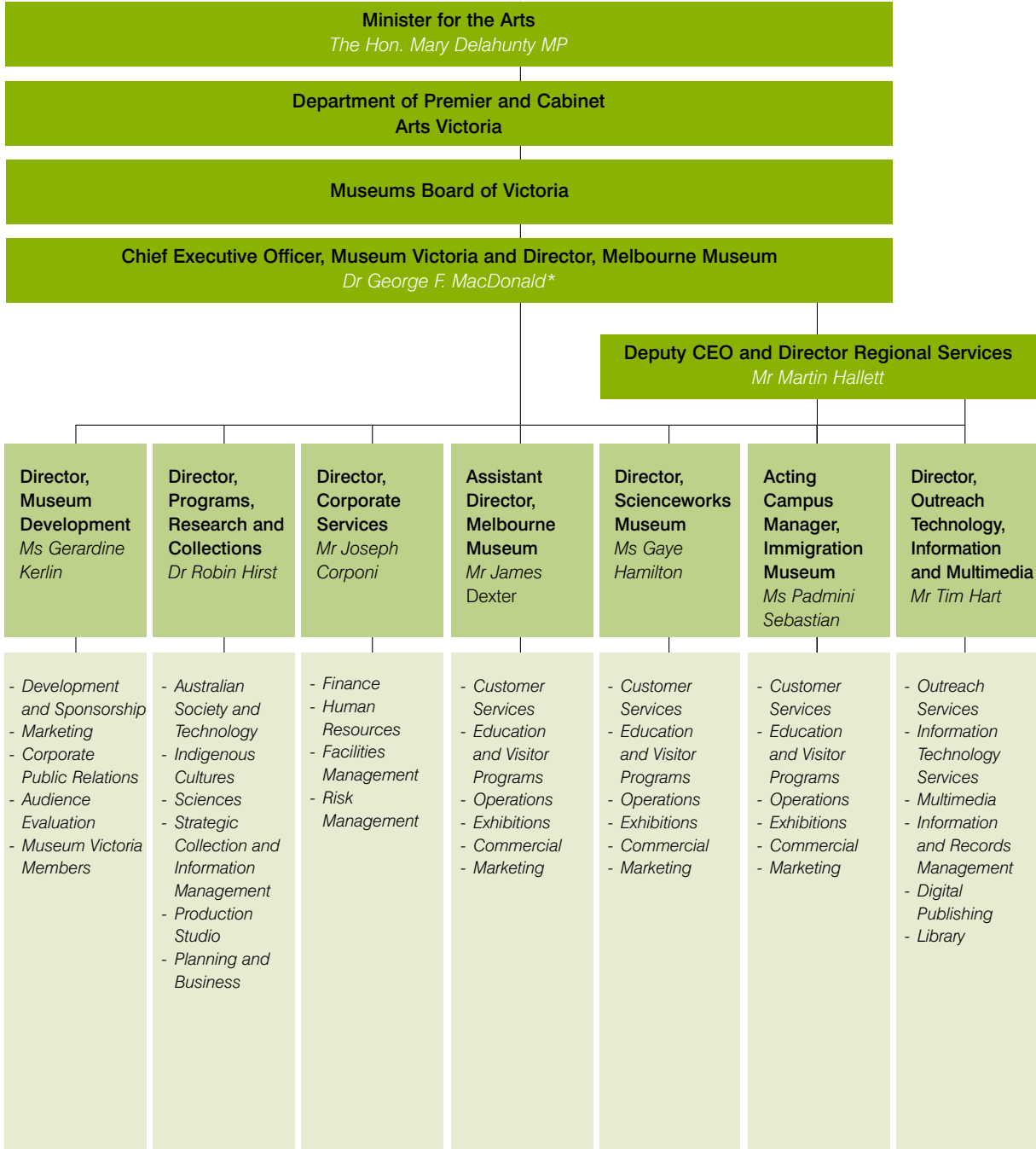
Responsible for public affairs and public relations, government relations, issues management, Museum Victoria membership, marketing and market research, fundraising and development. Aims to make Museum Victoria a leader in these fields.

Acting Campus Manager Immigration Museum and Hellenic Antiquities Museum

Padmini Sebastian BA, Grad Dip Journ.
Appointed February 2001.

Responsible for the continuing development of the Immigration Museum as a significant and dynamic heritage and cultural venue in Victoria. Also responsible for the delivery of high quality and engaging public programs focused on the immigration experience and resulting diversity, whilst ensuring the financial viability of the Museum's operations.

Museum Victoria Organisational Structure as at 30 June 2001



*George MacDonald will leave Museum Victoria in October 2001. Martin Hallett will be Acting CEO until a new Chief Executive Officer is appointed.

Museum Victoria Partners

Museum Victoria actively seeks corporate and philanthropic partnerships within the community. These partnerships enable Museum Victoria to develop and sustain the highest quality public access and programming. During the year, Museum Victoria welcomed a number of new partners, especially through the opening of the Melbourne Museum.

Scienceworks Museum and the Immigration Museum hosted a number of touring exhibitions with invaluable support from sponsors, supporters and campus partners. Community-based sponsors generously supported the Immigration Museum's Access Gallery exhibitions.

Museum Victoria continued to receive substantial support from the Victorian Government.

Principal Partners

- The Age
- Bristol-Myers Squibb
- Commonwealth Bank
- Community Support Fund
- Department of Education, Employment and Training
- GlaxoSmithKline
- Melbourne Water
- Seven Network Limited
- The Sidney Myer Fund
- Streets Icecream
- Tattersall's

Major Partners

- City of Melbourne
- Grollo Family
- JC Decaux
- Melbourne Water
- Menzies Foundation
- The Myer Foundation
- Network Ten
- Pacific Dunlop
- Mrs Sarah and Mr Baillieu Myer
- Schiavello Commercial Interiors
- Schweppes Cottee's
- Mr Spiros Stamoulis
- Yarra Trams

Major Supporters

- Cadbury Schweppes Pty Ltd
- Catholic Education Office
- Sofitel Melbourne
- Visions of Australia

Supporters

- 774 ABC
- ACI
- Australian Unity
- BP Spotswood
- Herald-Sun
- John Danks Trust
- Melbourne Port Corporation
- Monash University Faculty of Information Technology
- Mrs Nancy Telford
- Natural Resources Conservation League
- Pearcey Foundation Inc
- Peter Rowland Catering
- Prime Television
- Radial Timber Australia
- Royal Botanic Gardens, Cranbourne
- The University of Melbourne Cultural Fund
- Victorian Health Promotion Foundation

New Partnerships

- The Age – Principal Print Media Partner, Naming Rights – The Age Theatre
- Seven Melbourne – exclusive television partner, Naming Rights – Seven Galleria
- Melbourne Water – Sewer Tour and Catchment Tour interactive displays
- Streets Icecream – exclusive icecream supplier, Naming Rights – Paddle Pop Playground
- Schweppes Cottee's – exclusive supplier soft drinks
- Grollo Family – Grollo Fountain
- Sofitel Melbourne – exclusive hotel
- Natural Resources Conservation League – Forest Gallery
- Royal Botanic Gardens, Cranbourne – Forest Gallery
- Radial Timber Australia – Forest Gallery
- Visions of Australia – *Thookay Ngaweeyan* exhibition

- Pearcey Foundation – *The First Computer Mouse* book
- Monash University Faculty of Information Technology – the *@digital.au* exhibition
- Mrs Nancy Telford – Phar Lap collection

Museum Victoria Ambassadors

The Museum Ambassadors is a newly formed group of people from diverse backgrounds who have come together to support Melbourne Museum. Led by Maria Prendergast, writer and arts consultant, they aim to be advocates for Museum Victoria within their spheres of influence and communities, and to assist with fundraising by opening doors to corporate sponsors and other benefactors.

Ambassadors

Ms Maria Prendergast
 Ms Sally Browne
 Ms Ita Buttrose AO
 Mr George Kypraios
 Mr Cesare Leonardi
 Mr Peter McMullin
 Mr Ken Mahlab
 Ms Gabrielle Pizzi
 Mr Jack Scanlan
 Ms Lousje Skala
 Mr Simon Westcott

Honorary Appointments

Honorary Life Fellows

Individuals considered to have made a significant contribution to the intellectual or other development of Museum Victoria.

Professor Margaret Cameron AM
Professor John Coghlan AO
Mrs Amanda Derham
Mr Bob Edwards AO
Ms Jill Gallagher
Professor Rod Home
Mr Harold Kemp OAM
Mr John Kendall AM
Dr Phillip Law AC AO CBE
Professor Daryl Le Grew
Ms Jenny Love
Dr Ray Marginson AM
Mr Phillip Morrison
Professor John Mulvaney AO
Mrs Sarah Myer
Mrs Caroline Searby
The Hon. Haddon Storey QC
Professor John Swan
Professor James Warren
Dr Barry Wilson

Honorary Associates

Individuals who can be called upon to provide specialist advice and assistance on an honorary basis.

Indigenous Cultures

Mr Anthony Birch
Dr David Dorward
Dr Colin Hope
Professor Marcia Langton
Ms Joanne MacDonald
Dr John Morton
Mr Alan West

Sciences

Mr Ken N. Bell
Mr Philip E. Bock
Mr Robert Burn
Dr Patricia L. Cook
Dr Lawrence J. Cookson
Dr John Douglas
Dr Andrew Drinnan
Dr Dean R. Hewish
Dr Jean Just
Mr Ron C. Kershaw
Mr Rudie H. Kuitert
Dr Anthony K. Lee
Mr William H. Loads
Professor John F. Lovering
Mr Charles W. McCubbin
Dr James R. MacDonald
Mrs Mary Lee MacDonald
Mr John V. Neil
Dr Gareth Nelson
Dr Tim R. New
Mr Ken Norris
P. Mark O'Loughlin
Dr Graham Pizzey AM
Dr Joyce R. Richardson
Dr Richard Schodde
Dr Bronwen Scott
Mr David Staples
Professor John A. Talent
Professor Patricia Vickers-Rich
Mr Robert M. Warneke
Dr Jeanette E. Watson
Mr H. Eric Wilkinson

Curators Emeritus

Curators who retire after having served with Museum Victoria in an exemplary manner for a minimum of ten years.

Dr Alan W. Beasley
Mrs J. Hope Black
Dr Chung-Cheng Lu
Dr Arturs Neboiss
Dr Brian J. Smith

Volunteers

Once again our volunteer program proved to be very successful with a total of almost 500 people providing volunteer services for Museum Victoria throughout the year.

The Scienceworks Museum program continued to go from strength to strength with its vibrant team, the Immigration Museum embarked upon its volunteer program, whilst the opening of the Melbourne Museum saw a large influx of committed volunteers eager to participate.

These wonderful and dedicated teams of volunteers contributed a total of almost 44,000 hours of service, providing an invaluable human resource for the museum, assisting in diverse areas such as collection management, research, administration and public programs. The museum, the public and the volunteers themselves continue to benefit from the richness of experience that involvement as a Museum Victoria volunteer brings.

LEGEND

These denote which sections of the museum each volunteer has contributed to.

MM - Melbourne Museum
SW - Scienceworks Museum
IM - Immigration Museum
MD - Museum Development
OTIM - Outreach, Technology, Information and Multimedia
PRC - Programs, Research and Collections

Acciacarelli, Jacqueline	MM	Brodie, Robert	MM	Davies, Judy	MM	Gainsford, Pam	SW
Ada, Ian	MM	Brown, Bernice	MM	Davis, Sandra	SW	Gaiton, Claudia	MM
Adamache, Patricia	MM	Brown, Clare	MM	Day, Bernard	PRC	Galloway, Anna	MM
Adams, Anne	MM	Browne, Raymond	SW	de Gooyer, Tanyth	SW	Gamage, Chamitha	SW
Ager, Les	MM	Bryan, Harry	MM	Dethridge, Janene	MM	Gardner, Colleen	MM
Agriopoulos, Arthur	MD, MM	Buchanan, Chris	PRC	Devincentis, Rebecca	MD, MM	Gay, Mathew	MM
		Bullard, Sally	SW			Gengoult - Smith, Jillian	PRC
Alderson, Phyl	MM	Burlock, Les	MM	Dickie, William	SW	Georgopoulos, Victor	SW
Ambrose, Corrie	MM	Burn, Robert	PRC	Dickinson, Ruth	MM	Ghazali, Shahril	MM
Ambrus, Vivian	MM	Burt, Jennifer	SW	Dingle, Angelique	MM	Giatsios, Christina	SW
Angelini, Tania	OTIM	Butt, Marion	MM	Dixon, Colleen	MM	Gievski, Jasmina	MM
Anzil, Rebecca	MM	Caldwell, Vernon	SW	Doig, Judith	SW	Girdler, Janet	SW
Argo, Betty	PRC	Cally, Clare	MM, PRC	Donaldson, Anne	SW	Goetze, Diane	MM
Arnott, Warren	SW			Donnan, Bob	SW	Goncalves Da Silva, Jennifer	MM
Ashley, Mel	SW	Campbell, Guy	MM			Gooding, Norman	SW
Attard, Mark	MM	Carkeek, Malcolm	MM, PRC	Doquile, Julie	MM	Graham, Elsie	MM
Austin, Jack	PRC			Doran, Pam	MM	Grant, Heather	SW
Ayton, Keith	SW	Cauchi, Vince	SW	Dormer, Marion	OTIM	Green, Ken	PRC
Backhouse, Derek	PRC	Chandler, Barry	SW	Dornan, Roderick	MM	Green, Lorraine	MM
Bailey, Christoff	MM	Cher, Carla	SW	Douglas, Jack	SW	Green, Peter	MM
Bailey, Ro	MM	Chettle, Peter	SW	Drummond, Anna	MM	Green, Tony	SW
Baines, Justin	SW	Childs, Jan	MM	Duggan, Gerry	PRC, MM	Greene, Kate	MM
Baker, Fay	PRC	Chisholm, Sue	MM			Greenfield, Mary	MM
Balachandra, Lilanga	MM	Chung, Cissy	MM	Durham, Lance	SW	Greenfield, Richard	MM
Balai, Susan	PRC	Clear, Justine	OTIM	Durham, Laura	SW	Grevatt, Alice	MM
Balalas, Maria	MM	Cleland, Kay	MM, PRC	Durham, Leigh	SW	Griffiths, Tamara	SW
Baldya, Darren	PRC			Dyton, Christine	MM	Gruskin, Sara	SW
Barlow, Nicole	SW	Clemens, Alexia	MM	Eales, Barbara	MM	Guthrie, Rosalie	PRC
Barry, Margaret	MM	Clifford, Kate	SW	Eccleston, Sarah	SW	Hales, George	SW
Baszczyn, Elzbieta	MM	Codognotta, Kathleen	SW	Edwards, Rodney	MM	Halliwell, Sue	MM
Bathgate, Rachael	PRC	Coilett, May	PRC	Eisfelder, Kevin	SW	Hampton, Judith	MM
Baxter, Christine	MM	Cole, Brian	SW	Elliot, Sean	SW	Handreck, Clarrie	PRC
Baylis, Michael	SW	Cole, John	SW	Ellis, Claire	SW	Hanke, Andrea	MM
Beardsley, June	PRC	Cole, Peggy	PRC	Elston, Kylie	MM	Hardham, Helen	MM
Beeson, Abigail	MM	Collins, Nina	MM	Erskine, Tracey	MM	Harrington, Helena	MM, PRC
Begley, Jessica	MM	Collins, Sarah	MM			Harvey, Aaron	MM
Behjat Mohammadi, Parisa		Condiilis, Anthea	SW	Evans, Gerry	SW	Harwood, Walter	MM
Bell, Ken	PRC	Connors, Emily	OTIM	Evans, Krystal	SW	Haupt, Lyn	PRC
Bewley, Kelly	PRC	Cook, Loris	MM	Ewing, Alice Dorney	PRC	Hawker, Dale	SW
Billett, Margaret	MM	Cook, Pat	MM	Fabry, Bert	SW	Hayes, Phillip	SW
Bird, George	SW	Couche, Carmen	MM	Fahey, Monique	SW	Hayes, Raymond	SW
Bird, Rita	SW	Crawford, Robert	MM	Fairbrother, Leanne	MM	Hayes, Richard	SW
Birkett - Rees, Jessie	MM	Creaser, Louise	MM, PRC	Farmery, Helen	MM	Healy, Brian	SW
Birnbaum, Tosca	MM			Faulkner, Ben	MM	Hebb, Elizabeth	PRC
Blake, Trevor	PRC	Crockett, Pam	MM			Hewish, Dr, Dean	PRC
Bock, Philip	PRC	Crohn, Val	SW	Featherston, Rebecca	MM	Heydon, Jill	MM
Boon, Joyce	SW	Croker, John	MM	Finniss, George	MM	Hicks , Andrew	PRC
Boothroyd, Ray	SW	Cross, Karen	MM	Flanagan, Luke	MM, PRC	Hickson, Dorothy	MM
Borgueta, Gladys	MM	Crouch, Jessica	MM			Hill, Barbara	MM
Borgueta, Noel	MM	Croxford, Peter	SW	Forrest, Robyn	MM	Hill, Helen	MM
Bosson, Clifford	SW	Curnow, Angela	MM	Forshaw, Meryll	PRC	Hirst, Kay	MM
Bosworth, John	PRC	Cuthbert, Jean	PRC	Fox, Pam	MM	Ho, Francis	SW
Bradbury, Richard	MM	Dale, Jacqueline	MM	Fraser, Amber	MM	Ho, Raymond	MM, PRC
Breninger, Emily	MM	Dale, Matthew	PRC	Frazer, Jaqueline	MM	Hodge, Gwenneth	SW
Breninger, Martha	MM	Dale, Nick	MD, OTIM	Frisina, Belinda	MM		MM
Brereton, Tom	SW	D'Amour, S'hi	MM	Frost, Viane	MM		
Brignall, Brigid	SW	D'Aprano, Seona	SW	Frueh, Anne	MM		
				Fry, Jan	MM		

Hofmann, Albert	SW	Marriott, Tim	MM	O'Bryan, Lindsay	MM	Saunders, Graham	SW
Holmes, Frank	PRC		SW	O'Callaghan, Jack	SW	Schmidt, Dennis	SW
Hopf, Toby	MM	Martin, Sue	MM	Oliver, Judith	MM	Schmidt, Thomas	SW
Hopmans, Claire	MM	Mascitti-Costanzo,		Opperman, Carol	MM	Schneider, Carroll	MM
Horney, Stan	SW	Roberta	MM	Osmond, David	SW	Schwarz, Pam	MM
Horrocks, Lucinda	MM	Mason, James	MM	Palmer, Geoff	SW	Scibilia, Jasmine	MM
Howlett, Sharon	SW	Mason, Jim	SW	Parker, Ronald	MM	Scott, Bruce	MM
Hoyne, Alina	MM	Matthews, Christine	MM	Parker, Sally	SW	Scott, Trudy	SW
Hunter, Molly	MM,	Matthies, Kate	MM	Parr, Liz	MM	See, Jason	SW
	PRC	Mayall, Emma	MM,	Parry, Ian	SW	Severino, Susan	MM
Huxley, Marion	MM		PRC	Parry, Kenneth	SW	Shaikh, Abdul	SW
Huynh, Ngan-Ngoc	SW	Mays, Corrinne	PRC	Pasini, Emanuela	MM	Shaikh, Mehrunissa	MM
Ioualitene, Yasmin	IM	McCauley, Laurie	SW	Paterson, Joanne	MM		SW
Jackman, Peter	SW	McClellande, Claire	MM	Paynter, Natalie	MM	Shaw, Ron	MM
Johnson, Barbara	MM	McCluskey, Rachael	MM	Pennel, Michael	MM	Sidari, Frances	SW
Johnson, Ken	SW	McCulloch, Ellen	PRC	Pepperell, Lynn	MM	Simon, Naomi	MM
Johnston, William	PRC	McFadden, Paul	MM	Perillo, Analia	MM	Simpson, Carol	SW
Johnstone, Peter	SW	McGeehan, Helen	SW	Perry, Marlo	MM	Sinclair, Kim	MM
Jones, Claire	MM	McGinley, Rose	MM	Pickthall, Colin	SW	Skingsley, Jill	SW
Karras, Christine	MM	McGowan, Ian	MM	Polkington, Jacqui	PRC	Skinner, Jack	SW
Kelly, Tony	PRC	McLean, Robyn	MM	Poole, Rosalind	PRC	Smith, Beverley	MM
Kemp, Michael	MM	McNabb, Wendy	MM	Pooley, Rona	MM	Smith, Hayley	MM
Kershaw, David	SW	McNeill- Young, Eliza	MM	Porter, Ken	SW	Snape, Jennette	MM
Kerss, Graeme	SW	McQuillan, Beatrice	MD,	Potter, Sonia	MM	Soundias, Deonisia	SW
Kidd, Janet	MM		MM	Prasek, Chris	SW	Steuart, Frank	PRC
Knight, Toni	PRC	Menhennitt, Harry	SW	Pratt, Liz	MM	Stevens, Sue	MM
Krautschneider, Astrid	MM	Merrit, Helen	MM	Presland, Gary	MM	Su, Jerry	MM
Krois, Jack	SW	Micallef, Maria	SW	Priestly, Pauline	SW	Szalek, Pat	MM
Kwong, Anita	MM	Millbourne, Margaret	SW	Purdon, Cathy	MM	Szoeke, Jason	PRC
La, Tinh Thanh	MM	Miller, Anne	MM	Quail, Annie	MM	Taft, Leon	SW
Lamond, Joan	PRC		SW	Quartel, Peter	SW	Tait, Bob	SW
Lancel, Prue	MM	Miller, Toby	MM	Quincho, Monica	SW	Tang, Leah	MM
Lane, Walter	MM	Mills, Stuart	PRC	Raadik, Ivy	PRC	Targan, Targan	MM
Lau, Jackie	MM	Mitchell, Olivia	MM	Rebellato, Mara	MD,	Taylor, Brian	SW
Launikonis, Margaret	SW	Moffatt, Kate	MM		MM	Taylor, Howard	SW
Leach, Jack	PRC	Montesano, Nancy	MM	Reed, Stuart	SW	Taylor, Marion	SW
Leach, Mark	MM	Moon, Traudl	MM,	Reid, Mandy	PRC	Thanopoulos, Panayiotis	MM
Leggett, Fiona	MM		PRC	Reiner, Karen	SW		SW
Lehmann, Sherri	PRC	Moore, Dawn	MM	Remington, Steve	MM	Thompson, Fleur	MM
Lennox, Francis	MM	Moore, Natalie	MM	Retallack, Nick	SW	Thompson, Robert	PRC
Lewis, Bill	SW	Moore, Stephen	PRC	Rich, Pamela	MM	Thornton, Marlene	MD,
Lewis, Kirsty	MM	Mordech, Alan	MM	Richardson, Neil	SW	Tisher, Elaine	MM
Lewis, William G	MM		SW	Riley, Dorothy	SW	Tisher, Richard	MM
Linden, Liba	MM	Morey, Anthony	PRC	Robb, Ann	PRC	Todaro, Anna	MM
Long, Janet	SW	Morgan, Isobel	MM	Robinson, Frank William	PRC	Tomelty, Alison	MM
Lord, Wayne	SW	Morton, Ted	SW	Rooke, Joan	MM	Toplek, Bianca	MM
Lovallo, Silvana	MM	Muir, Graham	MM	Rooke, Ray	MM	Tran, Chau	MM
Lovett, Edward	SW	Mulcahy, Joy	SW	Rose , Wendy	MM	Trikojus, Nina	PRC
Low, Elizabeth	MM	Munro, Debbie	MM	Rossetti, James	SW	Trinh, Hang	MM
Lowenstein, Alice	MM	Murray, Liz	MM	Rowe, Kate	MM	Tsaimos, Maria	MM
Loy, Betty	MM	Mutimer, Jade	MM	Rumba, Anita	MM	Tunchon, Peter	SW
Lumsden, Ramona	MM	Ness, Robert	SW	Rumney, Aruna	MM	Tutera, Peter	PRC
Mac Lennan, Ellen	MM	Nguyen, My	MM	Ruse, Pauline	MM	Utmar, Gary	MM
MacDonald, Patricia	MM	Ngyuen, Hanh Thao	MM,	Ryan, Bernard	MM	Vadivelloo, Yoges	MM
Mallillin, Sheryn	SW		PRC	Ryan, Delwyn	MM,	Vafilidies, Platon	PRC
Maplestone, Bruce	MM	Nicholls, Brod	MM		PRC	Van De Waalle,	
Marcolin, Sergio	MM	Nicholson, Kerry	MM	Samman, Nasser	MM	Margaret	MM
Marek, Dagmar	MM	Nunnold, Justin	SW	Satchell, Mary	SW	van Klaveren, Lianne	MM
Marriott, Peter	PRC	O'Brien, Clare	SW	Saunders, Amy	MM	Vanderlinde, Sarah	MM

Vicino, Sheryl	MM
Vivio, Dawn	MM
Vodicka, Sonya	SW
Volosinas, Alexandra	SW
Wagner, Sonja	SW
Wain, Angela	MM
Walker, Chris	PRC
Walker, Hannah	MM
Walker, Judith	PRC
Wallace, Bronwyn	PRC
Walshe, Jean	MM
Walton, Thelma	MM
Wan, Edwin	SW
Wardrop, Alison	MM
Warren, Amy	MM
Watson, Christie	MM
Webb, Barry	SW
Webb, Cathryn	MM
Webb, Laura	SW
Weybury, Jean	SW
Whelan, Maureen	MM
Whitecross, Katie	MM
Whitehorn, Roy	MM
Whitelaw, Shay	MM
Whittingham, Heather	SW
Wilks, Vic	SW
Williams, Emma	MM
Williams, Leonie	MM
Williams, Pauline	SW
Willmer, Len	SW
Wills, Barbera	MM
Wilson, Jenny	MM
Wilson, Marita	MM
Wolstenholme, Graham	SW
Woodward, Bill	PRC
Woolnough, Jo	MM
Wu, Rebecca	SW
Yew, Mei	SW
Younan, Anna	MM
Young, Kylie	SW
Zagorski, Jack	SW
Zang, Christina	MM

Museum Victoria Members

Considerable growth in membership was experienced during the year with the opening of Melbourne Museum. Museum Victoria continues to have the largest non-art museum membership in Australia. Members receive a range of exclusive benefits while supporting and encouraging the growth and development of Museum Victoria.

Benefits

- Unlimited general admission to Museum Victoria venues.
- Subscription to the Museum Victoria Magazine.
- Discounts at the Melbourne Planetarium, Immersion Cinema Experience theatre, Museum Shops, IMAX Melbourne and the Melbourne Museum car park.
- Reciprocal free general admission to a number of interstate museums.

Membership Fees outlined on page 112

Museum Victoria Staff

- * Position funded by the Department of Education, Employment and Training
- ** Position funded by the Catholic Education Office
- Employed on a casual basis

DIRECTORATE

- George MacDonald
Chief Executive Officer, Museum Victoria & Director, Melbourne Museum
- Martin Hallett
Deputy Chief Executive Officer
- Dimitra Birthisel,
Corporate Counsel & Secretary, Museums Board of Victoria
- Jennifer Andre
Executive Assistant to the Chief Executive Officer
- Linda Malouf
Executive Assistant to the Deputy Chief Executive Officer
- Marion Thompson
Senior Research & Project Officer

PROGRAMS, RESEARCH & COLLECTIONS

Directorate

- Robin Hirst
Director
- Linda Cook
Project Assistant

Planning & Business

- Andrea Beattie
Manager
- Timothy Stranks
Project Officer

Australian Society & Technology

- Richard Gillespie
Head
- Carolyn McLennan
Project Assistant
- Edward Butler-Bowdon
Senior Curator Social & Domestic Life

- Matthew Churchward
Senior Curator, Technology & Innovation
- Elizabeth Dale
Senior Curator, Technology & Sustainable Futures
- David Demant
Curator, Information Technology
- Michele Eisen
Project Manager, Pumping Station Project
- Kenneth Galloway
Materials Handling Officer
- Fiona Kinsey
Assistant Curator, Technology
- Ruth Leveson
Senior Collection Manager
- Moya McFadzean
Senior Curator, Immigration & Cultural Diversity
- Janet Pathe
Assistant Collection Manager
- Alison Raaymakers
Assistant Collection Manager
- Michael Reason
Assistant Curator, Australian Society
- Ursula Richens
Assistant Collection Manager
- John Sharples
Senior Curator, Numismatics
- Elizabeth Willis
Senior Curator, Public & Institutional Life
- Emma Willoughby
Curator, Federation

Melbourne's Golden Mile Heritage Trail

- Justin Francis
Project Manager
- Alexander Aikman
*Tour Guide**
- Laurette Austin
*Tour Guide**
- Robin Birch
*Tour Guide**
- Anne Bottomley
*Tour Guide**
- Marion Brauer
*Tour Guide**
- Therese Dignam
*Tour Guide**
- Kenneth Dimsey
*Tour Guide**

- Wilma Farrow
Tour Guide°
- Anne Miller
Tour Guide°
- Helen Prohasky
Tour Guide°
- Susan Wharton
Tour Guide°
- Bronwyn Wilson
Tour Guide°

Indigenous Cultures

- Gaye Sculthorpe
Head
- Lindy Allen
Senior Curator, Northern Australia
- Bernard Gristwood
Assistant Collection Manager
- Penelope Ikingier
Collection Manager
- Mary Morris
Collection Manager
- Melanie Raberts
Senior Collection Manager
- Ronald Vanderwal
Senior Curator, Oceania
- Rosemary Wrench
Collection Manager

Sciences

- Leslie Christidis
Head
- Stella Claudius
Project Assistant
- Tania Bardsley
Collection Manager, Ichthyology
- William Birch
Senior Curator, Geology
- Dianne Bray
Collection Manager, Ichthyology
- Martin Bush
Curator, Science Communication
- John Coventry
Senior Collection Manager, Herpetology
- Mark Darragh
Assistant Collection Manager, Mammals
- Thomas Darragh
Senior Curator, Invertebrate Palaeontology
- Ross Field
Development Manager, Forest Gallery

- Lina Frigo
Collection Manager, Mammals
- Martin Gomon
Senior Curator, Ichthyology
- Vanessa Hayes
Curator, Molecular Biology
- Dermot Henry
Collection Manager, Minerals & Fossils
- Tanya Hill
Curator, Astronomy
- Simon Hinkley
Assistant Collection Manager, Entomology & Arachnology
- David Holloway
Senior Curator, Invertebrate Palaeontology
- Andrea Horvath
Senior Curator, Human Mind & Body
- Peter Lillywhite
Assistant Curator, Terrestrial Invertebrates
- Wayne Longmore
Assistant Collection Manager, Ornithology
- Richard Marchant
Senior Curator, Terrestrial Invertebrates
- Catriona McPhee
Assistant Collection Manager, Entomology & Arachnology
- John Moverley
Research Scientist, Marine Biology
- Janette Norman
Senior Curator, Molecular Biology
- Rory O'Brien
Assistant Collection Manager, Ornithology
- Timothy O'Hara
Research Scientist, Marine Biology
- Katherine Phillips
Senior Curator, Science Communication
- Gary Poore,
Senior Curator, Marine Invertebrates
- Thomas Rich
Senior Curator, Vertebrate Palaeontology
- Christopher Rowley
Assistant Collection Manager, Invertebrates

- David Staples
Scientist, Marine Biology
- Melissa Storey
Scientist, Marine Biology
- Beverley Van Praagh
Scientist, Terrestrial Invertebrates
- Nurin Veis
Senior Curator, Human Mind & Body
- Kenneth Walker
Senior Curator, Entomology
- Genefer Walker-Smith
Scientist, Marine Biology
- Robin Wilson
Senior Curator, Marine Invertebrates
- Alan Yen
Senior Curator, Terrestrial Invertebrates

Strategic Collection & Information Management

- Maryanne McCubbin
Head
- Michelle Berry
Conservator
- Leah Breninger,
Manager, Exhibition Collections Co-ordination
- Caroline Carter
Collection Manager, Loans
- John Clarke
Assistant Conservator
- David Coxsedge
Co-ordinator, Integrated Pest Management
- Steve Eather
Assistant Manager, Moreland Annexe
- Penelope Edmonds
Senior Conservator
- Natalia Fraser
Inventory & Locations Officer
- Debra Frost
Assistant Collection Manager
- Rodney Gray
Moreland Annexe Support Officer
- Sally Groom
Conservator
- Nancy Ladas
Collections Project Officer
- Catherine Lovelock
Conservator
- Penelope Nolton
Assistant Conservator
- Neville Quick
Manager, Moreland Annexe

- Joanne Taylor
Assistant, Collections Information Systems
- Elycia Wallis
Manager, Collection Information Systems

Production Studio

- Tim Rolfe
Head
- Jonathan Augier
Media Production Officer
- John Broomfield
Media Production Officer
- Peter Bubulya
Digital Production Officer
- Edwina Circuit
Image Management & Copyright Officer
- James Cozens
Senior Preparator
- Lorette Fleming
Preparator
- Kathryn Fox
Producer
- Nicholas Frewen
Preparator
- Kym Haines
Preparator
- Melinda Iser
Planetarium Production Manager
- John Kean
Producer
- Toula Marra
Project Assistant
- Melanie Raymond
Manager, Media Production & Copyright
- Sally Rogers-Davidson
Digital Production Officer
- Dean Smith
Senior Preparator
- Rodney Start
Media Production Officer
- Peter Swinkels
Manager, Preparation
- Brendon Taylor
Preparator
- Ingrid Unger
Image Management & Copyright Officer
- Monica Zetlin
Planetarium Production Manager

**OUTREACH,
TECHNOLOGY,
INFORMATION &
MULTIMEDIA**

Directorate

- Timothy Hart
Director
- Bridie Berry
*Project & Administration
Officer*
- Matthew Nickson
*Creative Producer,
Special Projects*

Outreach Services

- William Coppinger
Group Manager
- Sheree Clements
Web Services Co-ordinator
- Louis Marshall
Digital Publishing Officer
- Veronica Scholes
Digital Publishing Officer
- Patrick Worsley
Education Producer
- Janet Marlow
Manager, Online Education
- Cathy Accurso
*Assistant Curator,
Online Project*
- Heather Martin
*Assistant Curator,
Online Project*
- Marjorie Rawlinson
*Assistant Curator,
Online Project*

Information Technology Services

- Mark Bean
*Personal Computer
Support Officer*
- Daniel Davy
*Personal Computer
Support Officer*
- Robert Forbes
Network Manager
- Donna Fothergill
*Electronic Museum
Project Officer*
- Forbes Hawkins
*Collections Systems
Administrator*
- Herbert Lim
Helpdesk Manager
- Bradley Morris
*New Technology
Systems Manager*
- Kathleen McConville
*Administrative
Support Officer*

- Kyleigh Nicholls
*Personal Computer
Support Officer*
- Sean Ryan
*Business Systems
Support Officer*
- David Schultz
*Personal Computer
Support Officer*
- Xiang Zhang
Unix Systems Administrator

Library Services

- Frank Job
Manager
- Valerie Hogan
*Research &
Reference Officer*
- Sandra Winchester
Librarian

Multimedia

- Jonathan Brownbill
Manager
- Tack-Foon Lim
Systems Administrator

Outreach Program

- Peggy Cole
Outreach Presenter
- Sarah Edwards
Coordinator Public Programs
- Raoul Jones
Outreach Presenter
- Brian Miller
Outreach Presenter
- Lee-Anne Raymond
*Project Officer,
Outreach Programs*

**Records & Information
Management**

- Alison McNulty
Manager

CORPORATE SERVICES

Directorate

- Joseph Corponi
Director
- Madeleine Oakes
Executive Projects Officer
- Sally Scott
Personal Assistant

Facilities Management

- Kim Reason
Manager
- Graeme Broad
*Receipt &
Dispatch Controller*

- Kathrin Brunnemann
Administrative Assistant
- Laurence Carter
*Manager, Corporate Risk
and Occupational Health
& Safety*
- David Couper
Mail Coordinator
- Anthony Di Berardino
*Manager, Construction
Workshop*
- Peter Hunt
*Manager, Building
Supervision & Services*
- Kamran Jafari
*Facilities
Management Officer*
- Glen Miners
Cabinet Maker
- Andrew Moritz
*Project Manager,
Major Projects*
- Paul Susnjara
Display Painter
- Pasquale Vitoli
Loading Area Manager
- Annette Winkler
Cabinet Maker
- Peter Young
*Building Maintenance
Engineer*

Finance & Administration

- Catherine Richards
Manager
- Catherine Daniels
Finance Officer
- Alexander Duncan
Contract Coordinator
- Joseph Forbes
*Purchasing & Fleet
Management*
- Maria Hammill
Finance Officer
- Marcel Khoury
Finance Officer
- Ljubica McEune
*Finance System
Administrator*
- Sebastiano Morda
*Manager, Accounting
Operations*
- Vikki Schipper
*Accounting
Operations Leader*
- Sheila Scott
Finance Officer
- Susan Scott
Finance Officer

Human Resources

- Peter Brown
*Manager, Employee
Relations*
- Fleur Bourke
Human Resources Officer
- Grace D'Agostino
*Manager, Organisation
Development*
- Elyse Davies
Human Resources Officer
- Paul Davies
*Manager, Organisation,
Classification & Recruitment*
- Carolyn Harvey
Manager, Employee Services
- Melissa Holloway
Human Resources Officer
- Keti Icovski
Human Resources Officer
- Aileen Sinclair
Human Resources Officer
- Pamela Victoire
Human Resources Officer

MUSEUM DEVELOPMENT

Directorate

- Gerardine Kerlin
Director
- Annie Barker
Executive Assistant
- Evan Spurway
Business Manager

Corporate Development

- Erin McMahon
Project Officer
- Tony McShanag
Administration Officer

Market Research & Evaluation

- Carolyn Meehan
Manager
- Cindy Ferguson
Research Officer
- Kim Glover
Research Officer
- Hannah Walker
Study Coordinator
- Elizabeth Beyer
*Data Collation Officer**

Marketing

- Rosemary Hiscock
Manager
- Fay Valcanis
Senior Marketing Officer

- Maree Martin
Tourism Marketing Officer
- Emanuela Ciavarella
*Tourism Marketing Project
Co-ordinator*

Museum Victoria Members

- Colleen Wendt
Manager
- Bianca Lapins
*Membership &
Administration Officer*

Corporate Public Relations

- Sue Hobbs
Manager
- Katrina Hall
*Senior Public
Relations Officer*
- Kate Milkins
Public Relations Officer
- Melinda Viksne
*Administrative
Support Officer*

MELBOURNE MUSEUM

Directorate

- George MacDonald
*Chief Executive Officer,
Museum Victoria & Director,
Melbourne Museum*
- James Dexter
Assistant Director
- Joseph Bogdanov
Executive Assistant
- Marilena Ciccullo
Business Manager
- Ronnie Fookes
*Project Manager,
Public Spaces*
- Myra Millward
*Administration Assistant**
- Olga Petalas
Project Assistant
- Lucinda Robertson
*Administration Assistant**

Commercial Operations

- Tamara Jungwirth
*Commercial Manager,
Catering & Functions*
- Justine Beltrame
Retail Assistant
- Peter Brereton
*Group Manager,
Commercial*
- Sheridan Chenhalls
Retail Assistant
- Amanda Clarebrough
Senior Retail Assistant

- Joseph Coleman
*Technical Support Officer,
Immersion Cinema
Experience theatre*
- Andrew Eastwood
Retail Assistant
- Nicola Franklin
*Commercial Co-ordinator,
Car Park & Royal
Exhibition Building*
- Joany Grima
*Functions Administrative
Assistant*
- Ruth Gould
Senior Retail Assistant
- Madeleine Hamilton
Retail Assistant
- Sancho Hernandez
Retail Assistant
- Lara Kisilewsky
Retail Assistant
- Asa Letourneau
Retail Assistant
- Shae Leviston
Retail Assistant
- Marita Madden
Retail Manager
- David Stonier
Ticketed Events Manager
- Julia Walsh,
Retail Assistant
- Benjamin Wilkinson
Senior Retail Assistant

Education & Visitor Programs

- Peter Millward
Group Manager
- Colleen Boyle
*Senior Education & Visitor
Programs Officer*
- Jan Cramp
*Education Officer**
- Wayne Gerdtz
Information Officer, InfoZone
- Margaret Griffith
*Programs Co-ordinator,
Public Activity Programs*
- Larissa Grundy
Administrative Officer
- Jo Hawley
*Education & Visitor
Programs Officer*
- Catherine Hockey
Information Officer, InfoZone
- Laura Hvala
*Education Officer***
- Gregory Hunt
*Programs Co-ordinator,
Schools Education*

- David Jay
*Education Officer**
- Jennifer Kellett
*Senior Education & Visitor
Programs Officer*
- Yolande Kerridge
*Education Officer**
- Scott Killeen
*Education & Visitor
Programs Officer*
- Rachel Kousal
Information Officer, InfoZone
- Adrienne Leith
*Senior Education & Visitor
Programs Officer*
- Leanne McLean
*Assistant Programs
Co-ordinator, Volunteers*
- Geoff Moore
*Education Officer**
- Jamie Parsons
*Program Co-ordinator
Volunteers*
- John Stewart
*Education Officer**
- Bronwyn Thompson
*Manager, InfoZone
& InfoLinks*
- Geraldine Zeccola
*Education & Visitor
Programs Officer*

Bunjilaka

- Alan Brown
Manager
- Lorraine Coutts
*Project Officer, Community
Support Roving Curator*
- Joy Sellars
*Education & Visitor
Programs Officer*
- Sandra Smith
*Program Co-ordinator,
Family History*

Children's Museum

- Ingrid Tadich
Manager
- Anthony Balla
*Education & Visitor
Programs Officer*
- Lorraine Langmuir
*Education & Visitor
Programs Officer*

Exhibitions

- Penelope Morison
Group Manager
- Lyn Price
Administrative Assistant

- Eve Almond
Co-ordinator, Exhibitions
- Sue Grieve
Project Co-ordinator
- Danielle Whitfield
Exhibition Project Officer
- Juliet Wilson
Co-ordinator, Exhibitions

Forest Gallery

- Luke Simpkin
*Manager, Forest Gallery
& Live Exhibits*
- Alan Henderson
*Co-ordinator, Forest Gallery
& Live Exhibits*
- Andrew Aitken
*Assistant Keeper,
Live Exhibits**
- Chelsea Brown
*Assistant Keeper,
Live Exhibits*
- Deanna Dykstra
*Assistant Keeper,
Live Exhibits*
- Daniel Eyles
*Assistant Keeper,
Live Exhibits**
- Rachel Licheri
*Assistant Keeper,
Live Exhibits**
- Sandra Miljavec
*Assistant Keeper,
Live Exhibits**
- Carla Tadich
*Assistant Keeper,
Live Exhibits*

Operations

- Craig Gamble
Manager
- Nicholas Banner
*Technician**
- Elise Bishop
*Technician**
- Christopher Bond
*Technician**
- Vince Cafari
*Technician**
- Sally Campbell
*Technician**
- James Clavering
Technician
- Patrick Coville
*Technician**
- Marcel Debie
*Technician**
- Gillian Dingli
*Operations Manual
Developer*

- George Ferraro
General Hand
- Linda French
Finished Artist & Mac Operator
- Richard Glover
Senior Designer
- Mark Gray
Technician°
- Rolf Greve
Technician°
- Brenton James
Head Technician
- Luisa Laino
Designer
- Allan Maguire
Technician°
- Jason Morffew
Technician°
- Brendan O'Connor
Technician°
- Grant Porteous
Technician°
- John Robison
Technician°
- Matthew Scott
Technician°
- Philip Spinks
Technician
- Liam Sutherland
Technician°
- Guy Tyrrie
Technician°
- Visitor Services**
- Jack Crawford
Group Manager, Customer Relations
- Justin Byrne
Team Leader, Customer Service
- Loretta Calverley
Team Leader, Front of House & Call Centre
- Katherine Danylak
Audience Development and Marketing Officer
- Joanne Hereward
Team Leader, Front of House & Call Centre
- Maria Lamanna
Customer Service Co-ordinator
- Aaron Lawrence
Team Leader, Front of House & Call Centre
- Naomi McCurry
Team Leader, Front of House & Call Centre
- Debbie Stanley
Team Leader, Customer Service
- Scott Stevens
Team Leader, Customer Service
- Susan Taylor
Team Leader, Customer Service
- Carol Williams
Team Leader, Customer Service
- Anoushka Akel
Customer Service Officer
- Robert Babb
Customer Service Officer°
- Ann Baker
Customer Service Officer
- Veronica Barnett
Customer Service Officer
- Elzbieta Baszczyn
Customer Service Officer
- Jessica Bendell
Customer Service Officer
- Marcello Bernardi
Customer Service Officer°
- Claire Blewitt
Customer Service Officer°
- Kay Bloxom
Customer Service Officer
- Kathryn Brereton
Customer Service Officer
- Coen Brown
Customer Service Officer°
- Travis Burroughs
Customer Service Officer
- Paul Cabras
Customer Service Officer
- Rheimia Cerezo
Customer Service Officer
- Renae Clinton
Customer Service Officer
- Anita Dal Tio
Customer Service Officer
- Ayesha De Kretser
Customer Service Officer
- Pablo Diaz
Customer Service Officer
- Judith Dillon
Customer Service Officer
- Suzanne Dowling
Customer Service Officer
- Christopher Faulkner
Customer Service Officer
- Trevor Faure
Customer Service Officer
- George Filev
Customer Service Officer°
- Lisa Flower
Customer Service Officer
- Melanie Flynn
Customer Service Officer
- Blake Fox
Customer Service Officer
- Kathryn Fradd
Customer Service Officer
- Pamie Fung
Customer Service Officer°
- Natarsha Garling
Customer Service Officer
- Alicia Giacomello
Customer Service Officer
- Sacha Giacomello
Customer Service Officer
- Christina Giatsios
Customer Service Officer
- Matthew Gleeson
Customer Service Officer°
- Ruth Green
Customer Service Officer
- Patricia Hayes
Customer Service Officer
- Sandra Hesline
Customer Service Officer
- Arthur Howard
Customer Service Officer
- Crispin Howarth
Customer Service Officer
- Eliisa Hunt
Customer Service Officer°
- Dot Jackson
Customer Service Officer
- Kim Kaal
Customer Service Officer
- Glenn Kellam
Customer Service Officer
- Catherine Kerr
Customer Service Officer
- Anuwat Kongmun
Customer Service Officer
- Daniel Kuseta
Customer Service Officer°
- Adam Lamanna
Customer Service Officer
- Glenda Lanting
Customer Service Officer
- Alex Lee
Customer Service Officer
- Caroline Longmore
Customer Service Officer
- Ramona Lumsden
Customer Service Officer
- John Manolopoulos
Customer Service Officer
- David Marsh
Customer Service Officer
- Trevor Mason
Customer Service Officer°
- Philip Masters
Customer Service Officer
- Emma Mayall
Customer Service Officer
- Anthony McAleer
Customer Service Officer
- Veegan McMasters
Customer Service Officer
- Georgia Melville
Customer Service Officer
- Robyn Moore
Customer Service Officer
- Sarah Moore
Customer Service Officer
- Paola Morabito
Customer Service Officer°
- Rebecca Muir
Customer Service Officer°
- William Muir
Customer Service Officer
- Ngarra Murray
Customer Service Officer
- Trevor Newman
Customer Service Officer
- Amber O'Connell
Customer Service Officer
- Nanetta Old
Customer Service Officer
- Carmen O'Meara
Customer Service Officer°
- Allison Parsons
Customer Service Officer
- William Patten
Customer Service Officer
- Jason Peckitt
Customer Service Officer
- Michael Pennell
Customer Service Officer°
- Robert Peoples
Customer Service Officer
- Nicole Pomroy
Customer Service Officer°
- Susie Prestney
Customer Service Officer
- Michael Quin
Customer Service Officer°
- Jennifer Reardon
Customer Service Officer°
- Mara Rebellato
Customer Service Officer°
- Amy Reese
Customer Service Officer
- Rena Rennie
Customer Service Officer°
- Tracey Rigney
Customer Service Officer
- Edward Roberts
Customer Service Officer°
- Britt Romstad
Customer Service Officer
- Dylan Salamon
Customer Service Officer

- Julie Saylor
Customer Service Officer
- Melissa Sharp
Customer Service Officer
- Nicholas Smith
Customer Service Officer
- Michelle Stewart
Customer Service Officer
- Matthew Stylianou
Customer Service Officer
- Carla Tadich
Customer Service Officer°
- Yuki Tanaka
Customer Service Officer°
- Hayley Townsend
Customer Service Officer
- Willie Tang
Customer Service Officer°
- Alice Unmack
Customer Service Officer
- Katherine Williams
Customer Service Officer
- Jeremy Williamson
Customer Service Officer°
- Sonie Wilson
Customer Service Officer
- Simone Wolski
Customer Service Officer

**SCIENCEWORKS
MUSEUM**

Directorate

- Gaye Hamilton
Director
- Helen McVay
Executive Assistant

Administration

- Glenda Bateman
Business Manager
- Vesna Schubert
Administration Assistant
- Elizabeth Thompson
Administration Assistant

Operations

- Russell Marshall
Manager
- Gary Dole
General Hand
- Wayne Dole
General Hand
- Mark Evans
General Hand°
- Greg Gregoire
Operations Co-ordinator

Public Programs

- Genevieve Fahey
Manager
- Meryl Wells
Administrative Officer

Customer Services

- Peter Hannah
Manager
- Rosalyn Abbott
Customer Service Officer
- Beverley Ashford
Customer Service Officer
- Margaret Borgelt
Customer Service Officer
- Antonio Cappetta
Customer Service Officer
- Mary Dearing
Customer Service Officer
- Marianna Denardo
Senior Customer Service Officer
- Heather Dickenson
Customer Service Officer
- Susan Eather
Senior Customer Service Office
- Wendy Feth
Customer Service Officer
- Geoffrey Hayday
Customer Service Officer
- Charmaine Hayes
Customer Service Officer
- Diana Heard
Customer Service Officer
- Patricia Hughes
Customer Service Officer
- Glenda Inglis-Gillespie
Senior Customer Services Officer
- Kenneth McLeod
Customer Service Officer
- David Mountford
Customer Service Officer
- Paul Roszak
Customer Service Officer
- Fabiola Solano
Customer Service Officer
- Brian Miller
Customer Service Officer
- Susan Stent
Customer Service Officer
- Irene Tsourdalakis
Customer Service Officer°
- Regina Kaluzny
Customer Service Officer°
- Christina Plantek
Customer Service Officer°

- Christina Giatsios
Customer Service Officer°
- David Pascall
Customer Service Officer°
- Cinzia Pamich
Customer Service Officer°
- Nicole Grenfell
Customer Service Officer°
- Rosemary Westmore
Customer Service Officer°
- Paula Collins
Customer Service Officer°
- Ervina Lay
Customer Service Officer°

Exhibitions

- Andrew Lewis
Manager
- Lenna Angelovska
Designer
- Warren Arnott
Steam Engine Driver°
- Neil Brimsmead
Technical Officer°
- Ernest Cole
Steam Engine Driver°
- Lance Durham
Multimedia Technical Co-ordinator
- Kevin Eisfelder
Steam Engine Driver°
- Richard Hayes
Steam Engine Driver°
- Rodney Hudson
Technical Officer°
- Norman Jenkins
Steam Engine Driver°
- Jeremy Johnstone
Technical Officer
- Graham Kerss
Steam Engine Driver°
- Robert Kimpton
Technical Officer
- Desmond Lang
Supervisor, Engineering Workshop
- Zoran Lazarevic
Designer
- Anne Newnham
Designer
- Christopher Scott
Manager, Programs Workshop
- Gordon Somerville
Technical Officer
- Max Strating
Technical Officer
- Keng Wan
Interactive Technical Officer

Programs Education

- Penelope Stoyles
*Manager, Education**
- James Abbott
*Education Officer**
- Timothy Byrne
*Education Officer**
- Lucy Carroll
*Education Officer***
- Patricia D'Agrosa
Planetarium Education Officer
- Roderick Dunstan
*Education Officer**
- Faye Grant
Booking Officer
- Helen Lapiejko
Assistant Booking Officer
- Christine Mulvany
Education Officer°
- Peter Pentland
*Education Officer**

Promotions

- Melanie Dow
Manager, Marketing
- Vaneta Leventis
Functions Co-ordinator
- Carly Neubauer
Publicity & Promotions Officer

Visitor Programs

- Linda Sproul
Manager
- Kristy Brincat
Visitor Programs Officer°
- Joel Cohen
Visitor Programs Officer°
- Tanyth De Gooyer
Visitor Programs Officer°
- Michael De Zilva
Visitor Programs Officer°
- Wendy Duffy
Co-ordinator, Volunteers
- Sean Elliott
Visitor Programs Officer°
- Joanne Fyfe
Visitor Programs Officer
- Vera Gin
Visitor Programs Officer
- Anthony Green
Visitor Programs Officer°
- Deborah Hampson
Visitor Programs Officer
- David Newton
Visitor Programs Officer°
- Nicholas Stone

- Visitor Programs Officer*^o
- Katherine Toohey
Visitor Programs Officer^o
- Genevieve Wadham
Visitor Programs Officer

Retail

- Christian Heurteau
Shop Manager
- Amber Currie
Shop Assistant^o
- Justin Devlin
Shop Assistant^o
- Danielle Gibbins
Shop Assistant^o
- James Gregson
Shop Assistant^o
- Kristy Haass
Shop Assistant
- Shaun Rogers
Shop Assistant^o
- Padmaja Uppu
Shop Assistant^o

IMMIGRATION MUSEUM

Directorate

- Padmini Sebastian
Acting Campus Manager
- Joanna Madden
Executive Assistant
- Lorna Solar
*Receptionist &
Administration Assistant*

Customer Service

- Kim Heffernan
Co-ordinator
- Anne Adkins
Customer Service Officer
- Janelle Dunstan
Customer Service Officer
- Jason Franklin
Customer Service Officer
- Tola Geronikos
*Acting Team Leader,
Customer Services*
- Edward McDonald-Toone
Customer Service Officer
- Emily Mierisch
Customer Service Officer
- Katherine Potter
Customer Service Officer
- Evanthia Philippou
*Acting Assistant
Team Leader*

- Helen Sartinias
Customer Service Officer
- Katelyn Stanyer
Customer Service Officer

Exhibitions

- Judith Penrose
Manager
- Judith Bell
*Co-ordinator, Immigration
Discovery Centre*
- Damian Clark
*Co-ordinator,
Multimedia & Technical*
- Jeff Griffiths
*Supervisor,
Building & Services*
- Louise Murray
Project Assistant

Marketing & Promotions

- Helen McDonald
Marketing Manager
- Suzanne Gasper
*Administration Officer,
Tribute Garden*
- Elefteria Prodromou
Publicity Officer
- Bruce Thomson
Shop Supervisor

Public Programs

- Margaret Anderson
Education Officer
- Andrew Berridge
*Acting Visitor
Programs Officer*
- Lucy Carroll
*Education Officer***
- Simon Dalton
Education Officer
- Patrizia Ferrara
Education Officer
- Karen Jakubec
Administration Officer
- Maria Tence
*Acting Manager, Community
Access & Outreach*

Additional Information

Research Grants

The following research projects attracted external funding:

Allen, L. Touring exhibition funding for *Thookay ngaweeyan: Young Voices from Victoria*. Visions of Australia Program, Department of Communications, Information Technology and the Arts.

Australian Society and Technology Department. Centenary of Federation project: funding to appoint research curator position for 2001. Centenary of Federation, Victoria.

Christidis, L. Identification of mitochondrial DNA markers for assessing population structure in Western Long-Billed Corellas. Conservation and Land Management, Western Australia.

Danylak, K. Immigration Museum Audience Development Research Project funded by the Australia Council.

Holloway, D.J. Travel grant to attend the 3rd International Conference on Trilobites and their Allies, Oxford, England. Ian Potter Foundation.

Moverley, J. Examination of marine benthic communities at a proposed deep sea mine tailings dumping site, Koniambo, New Caledonia. NSR Environmental Consultants Pty Ltd.

Moverley, J. Examination of marine benthic communities at a proposed deep sea mine tailings dumping site, Moneo, New Caledonia. NSR Environmental Consultants Pty Ltd.

Moverley, J. Spatial variation in small coastal rivers. Environmental Protection Authority.

Norman, J. and Christidis, L. Conservation genetic studies on the Eyre Peninsula population of the Yellow-Tailed Black Cockatoo. National Parks and Wildlife Service, South Australia.

O'Hara, T.D. Community analysis of selected benthic invertebrate groups collected by Museum Victoria's Bass Strait Survey (1979-1983). Australian Geological Survey Organisation.

Poore, G.C.B. Identification of Crustacea from Port of Melbourne survey for introduced species. Marine and Freshwater Resources Institute.

Poore, G.C.B. Identification of Crustacea from Port Kembla survey for introduced species. NSW State Fisheries.

Sculthorpe, G. Museum Support Program and Community Support Program, Return of Indigenous Cultural Property Program 2000-2001. Department of Communications, Information Technology and the Arts.

Sebastian, P. Education, Access, Representation: Museums as Centres for Social Change, a report on Museological trends in the UK as part of the 2000 Churchill Fellowship.

Smith, I. Fungus treatments for the control of fungal diseases in myrtle beech trees. Centre for Forest Tree Technology. Department of Natural Resources and Environment.

Wilson, R.S. Travel grant to attend the International Workshop on Global Wrench Tectonics, Oslo, Norway. Fortum Petroleum AS.

Yen, A.L. Eastern Freeway extension. Butterfly and carabid beetle survey. VicRoads.

Yen, A.L. Survey on the effects of plague locust spraying on non-target invertebrates. Department of Natural Resources and Environment.

Yen, A.L. Survey on invertebrates of conservation significance in a proposed extension to Hazelwood Power Mine. Hazelwood Power.

Yen, A.L. Identification of pitfall trap invertebrates from the Menindee Lakes. Department of Natural Resources and Environment.

Yen, A.L. Pilot study to identify potential invertebrate indicators for remnant woodlands at Bairnsdale. Department of Natural Resources and Environment.

Yen, A.L. Study of invertebrate indicators of farm forests. West Gippsland Catchment Management Authority.

Yen, A.L. Flora and Fauna Guarantee Action Statements. Department of Natural Resources and Environment.

Yen, A.L. Strzelecki Burrowing Crayfish survey. Hancock Victorian Plantations.

Yen, A.L. Giant Gippsland Earthworm project. VicRoads.

Yen, A.L. Taiwan invertebrate biodiversity project. Australian Academy of Science and Taiwan National Science Council.

Yen, A.L. Uluru fauna survey. Parks Australia.

Yen, A.L. Eltham Copper Butterfly project. Parks Victoria, Shire of Nillumbik, City of Banyule, and Friends of the Eltham Copper Butterfly.

Yen, A.L. *Peronomyrmex* ant project. Department of Natural Resources and Environment.

Yen, A.L. Tasmanian canopy fogging project. Forestry Tasmania.

Collaborative research projects administered by other institutions that attracted external funding:

Christidis, L., Mulder, R.A. (University of Melbourne) and Bennett, A.T. (University of Bristol) were awarded an Australian Research Council Large Grant for research on *Mechanisms, maintenance and evolutionary origins of male dichromatism in paradise flycatchers*. This grant was administered through the University of Melbourne.

Gillespie, R., Tence, M. and Wills, S. (University of Melbourne) were awarded an Australian Research Council Strategic Partnerships with Industry Research and Training Program (SPIRT) grant for research on *Knowing their Place: a Social and Cultural History of British Migration in Late Twentieth-Century Australia*. This grant was administered through the University of Melbourne.

Gillespie, R., Brown-May, A. (University of Melbourne), City of Melbourne and Tourism Victoria were awarded an Australian Research Council Strategic Partnerships with Industry Research and Training Program (SPIRT) grant for research on *Melbourne On-line*. This grant was administered through the University of Melbourne.

Rich, T.H. and Vickers-Rich, P. (Monash University) were awarded an Australian Research Council grant for research on *Mesozoic Gondwanan high latitude terrestrial vertebrates: their palaeoenvironmental setting and biogeographical relationships with lower latitude and northern faunas*. This grant was administered through Monash University.

Rich, T.H. and Vickers-Rich, P. (Monash University) were awarded a grant by the Committee for Research and Exploration, National Geographic Society for a research project on *The Ghastly Blank 2001*, to search for Victorian and Australian Mesozoic tetrapods. This grant was administered through Monash University.

Walker, K., Danforth, B. (Cornell University) and Packer, L. (York University) were awarded a grant by the National Geographic Society to conduct research on a molecular phylogenetic world-wide evaluation of the bee genus *Lasioglossum*. This grant was administered through Cornell University.

Publications

Refereed Journals

Birch, W.D. 2001. Native zinc from Brunswick, Victoria, Australia: the case for and against a type locality. *Australian Journal of Mineralogy*, 7, 27-33.

Birch, W.D. & Henry, D.A. 2000. The geology collections of Museum Victoria, Melbourne. *Australian Journal of Mineralogy*, 6, 83-91.

Birch, W. D., Kolitsch, U., Witzke, T., Nasdala, L. & Bottrill, R. 2000. Petterdite, the Cr-dominant analogue of dundasite; a new mineral from Dundas, Tasmania, Australia, and Callenberg, Saxony, Germany. *Canadian Mineralogist*, 38, 1467-1476.

Cytowicz, B. 2000. Ruth Bishop. *Australasian Science*, October 2000, 46.

Darragh, T.A. 2000. Circulation figures for some nineteenth-century Victorian Country Newspapers. *Bibliographical Society of Australia and New Zealand Bulletin*, 23, 211-240.

Darragh, T.A. 2000. Robert Brough Smyth: his early correspondence with Adam Sedgwick. *Historical Records of Australian Science*, 13, 19-42.

Darragh, T.A. 2000. The Deutsche Vereine of Victoria in the Nineteenth Century. *Plenty Valley Papers*, 3, 66-86.

Hill, T.L., Heisler, C.A., Norris, R.P., Reynolds, J.E. & Hunstead, R.W. 2001. Starburst or Seyfert? Adding a radio and far-infrared perspective to the investigation of activity in composite galaxies. *Astronomical Journal*, 121, 128.

King, R.A. & Poore, G.C.B. 2001. Redescription of the tropical Australian isopod, *Lyidotea nodata* Hale, 1929 (Crustacea: Idoteidae). *Memoirs of Museum Victoria*, 58, 365-371.

Koslow, J.A., Gowlett-Homes, K., Lowry, J.K., O'Hara, T., Poore, G.C.B. & Williams, A. 2001. Seamount benthic macrofauna off southern Tasmania: community structure and impacts of trawling. *Marine Ecology Progress Series*, 213, 111-125.

McNulty, A. 2000. Notes: Museum Victoria Information and Records Management, *Archives and Manuscripts*, 28, 152-154.

Marchant, R. & Hehir, G. 2000. How efficient is extraction of stream insect larvae from quantitative benthic samples? *Marine and Freshwater Research*, 51, 825-826.

Marchant, R., Wells, F. & Newall, P. 2000. Assessment of an ecoregion approach for classifying macroinvertebrate assemblages from streams in Victoria, Australia. *Journal of the North American Benthological Society*, 19, 497-500.

Maxwell, P.A. & Darragh, T.A. 2001. Australasian palaeobiogeography: the Palaeogene and Neogene record. Mollusca. *Memoirs of the Association of Australasian Palaeontologists*, 23, 411-420.

Murray, P., Megirian, D., Rich, T.H., Plane, M. & Vickers-Rich, P. 2000. The Miocene genus *Neohelos* (Marsupialia, Diprotodontia, Zygomaturinae) from Central and Northern Australia. *Records of the Queen Victoria Museum*, 105, 1-47.

New, T.R., Van Praagh, B.D. & Yen, A.L. 2000. Fire and the management of habitat quality in an Australian lycaenid butterfly, *Paralucia pyrodiscus lucida* Crosby, the Eltham Copper. *Metamorphosis*, 11, 154-163.

Norman, J & Christidis, L. 2000. The use of DNA in natural history studies. *Victorian Naturalist*, 117, 219-225.

O'Hara, T.D. & Poore, G.C.B. 2000. Distribution and origin of Southern Australian echinoderms and decapods. *Journal of Biogeography*, 27, 1321-1335.

- O'Loughlin, P.M. 2000. A review of the cucumariid genus *Psolidiella* Mortensen (Echinodermata: Holothuroidea). *Memoirs of Museum Victoria*, 58, 25-38.
- O'Loughlin, P.M. & Alcock, N. 2000. The New Zealand Cucumariidae (Echinodermata: Holothuroidea). *Memoirs of Museum Victoria*, 58, 1-24.
- Poore, G.C.B. 2001. Isopoda Valvifera: diagnoses and relationships of the families. *Journal of Crustacean Biology*, 21, 213-238.
- Poore, G.C.B. 2001. Families and genera of Isopoda Anthuridea. *Crustacean Issues*, 13, 63-173.
- Poore, G.C.B. & Brandt, A. 2001. *Plakarthrium australiense*, a third species of Plakarthriidae (Crustacea: Isopoda). *Memoirs of Museum Victoria*, 58, 373-382.
- Rich, T.H., Flannery, T.F., Trusler, P., Kool, L., van Klaveren, N.A. & Vickers-Rich, P. 2001. A second tribosphenic mammal from the Mesozoic of Australia. *Records of the Queen Victoria Museum*, 110, 1-9.
- Rich, T.H., Vickers-Rich, P., Trusler, P., Flannery, T.F., Cifelli, R., Constantine, A., Kool, L. & van Klaveren, N. 2001. Monotreme nature of the Australian Early Cretaceous mammal *Teinolophos*. *Acta Palaeontologica Polonica* 46, 113-118.
- Sandford, A.C. 2000. Trilobite faunas and palaeoenvironmental setting of the Silurian (early Ludlow) Melbourne Formation, central Victoria. *Alcheringa*, 24, 153-206.
- Sutherland, F.L., Pogson, R.E., Birch, W.D., Henry, D.A., Pring, A., Bevan, A.W.R., Stalder, H.A. & Graham, I.T. 2000. Mineral species first described from Australia and their type specimens. *Australian Journal of Mineralogy*, 6, 105-128.
- Taylor, J. & Poore, G.C.B. 2001. Descriptions of new species of *Birubius* (Amphipoda: Phoxocephalidae) from Australia and Papua New Guinea with comments on the *Birubius-Kulgaphoxus-Tickalerus-Yan* complex. *Memoirs of Museum Victoria*, 58, 255-295.
- Wainer, J.W. & Yen, A.L. 2000. The butterfly fauna of the Papps Scenic Reserve, Mansfield, Victoria. *Victorian Naturalist*, 117, 131-140.
- Walker-Smith, G.K. & Poore, G.C.B. 2001. A phylogeny of the Leptostraca (Crustacea) with keys to the families and genera. *Memoirs of Museum Victoria*, 58, 383-410.
- Ward, D.F., New, T.R. & Yen, A.L. 2001. Effects of pitfall trap spacing on the abundance, richness and composition of invertebrates. *Journal of Insect Conservation*, 5, 43-47.
- Non-Refereed Journals and Reports**
- Allen, T.A. & O'Hara, T.D. 2000. Poster supplements on: Victoria's undersea treasures - Port Campbell, Western Port, Wilson's Promontory, Port Phillip, Port Phillip Heads. *The Sunday Age*, 23 and 30 July; 6, 13 and 20 August 2000.
- Anderson, M. 2000. Federation - the great unifier? *Ethos*, 8.
- Byrne, T. 2001. Hot Air Balloons. How to get up there using hot air. *Investigating* Issue 1 (17), 16-21.
- Byrne, T. 2001. Tilt, Rock and Roll. *Australian Science Teachers Journal*, April.
- Byrne, T. 2001. Investigating Shadows. *Class Ideas K-3*, 17. 7.
- Carroll, L. 2001. Home or Away: An online project meeting the needs of the middle years. *Teaching and Learning in the Middle Years*, 8 (2).
- Carroll, L., Nitty Gritty Super City - An adventure in science and technology for young learners. *Class Ideas K-3*, 17.
- Churchward, M. 2000. Transport to another place and time: activating heritage transport. *Insite Museums Australia Newsletter*, June-July 2000, 6.
- Edmonds, P. 2001. Pesticide contamination of Native American artefacts. Australian Institute for the Conservation of Cultural Material. *National Newsletter*, 78, 1-4.
- Grossman, J.N., Birch, W.D., Benoit, P.H., Sears, D.W.G., Clayton, R.N., Rubin, A.E. & Chizmadia, L.J. 2000. Rainbow: a new CO₃ chondrite from Australia. *Lunar and Planetary Science* 31, Lunar and Planetary Institute, Houston, Texas, CD-ROM, Abstract 1355.
- Hinkley, S. & Yen, A.L. 2000. *Eastern Freeway extension between Springvale Road and Ringwood flora and fauna assessment supplement No. 16. Ongoing monitoring of the carabid beetles within the Eastern Freeway extension: year 2000 assessment*. Report to VicRoads. 19 pp.
- Hunt, G. 2001. Museums, means and ends. *Ethos P-6*, 9 (1), 31, 35.
- Hunt, G. 2001. Books, birds and all that jazz. Review of Michael Morcombe's *Field Guide to Australian Birds, Trees and Natural Resources*. Natural Resources
- Conservation League, 43 (1), 30-31.
- Jay, D. 2000. Shedding Light on the Indigenous Cultures Gallery. Review of the Indigenous Cultures Gallery at the South Australia Museum. *Museum National*, July.
- Kean, J. 2001. A stubbornly encyclopaedic museum. *Adelaide Review*, January.
- Kean, J. 2001. Johnny Warangkula Tjupurrula, Artist, Storyteller, circa. 1925. *The Age*, 26 February.
- Kerridge, Y. 2001. *Pushing the boundaries: the place of art at Melbourne Museum*. *Museums Australia on-line*. Proceedings of the Museums Australia 6th National Conference, ANU, Canberra, June.
- Leveson, R. 2001. Review of Buck, R.A. and Gilmore, J.A. (Eds) 1998. *The New Museum Registration Methods*. *ARC Journal of the Australian Registrars Committee*, 36, 20 (simultaneously published in *Museum National*, May 2001, 30).
- Mackie, J. 2001. *Report on Bryozoan Species Collected in the Geraldton Port Survey*. Report to Western Australian Port Authorities. 15 pp.
- Neville, P., Wainer, J. & Yen, A. 2001. *Assessing the enhancement and biodiversity values of tree planting for invertebrates*. Report to the West Gippsland Catchment Management Authority. 45 pp.
- Neville, P., Ward, D., Wainer, J. & Yen, A. 2001. *A survey of the effects of fenitrothion spraying on non-target invertebrates in areas affected by the Australian Plague Locust (Chortocetes terminifera (Walker))*. Report to the Department of Natural Resources and Environment. 64 pp.

- O'Hara, T.D. 2000. Patterns of temperate marine species diversity at the continental scale. In Ferns, L.W. and Hough, D. (Eds) *Environmental Inventory of Victoria's Marine Ecosystems Stage 3: Understanding biodiversity representativeness of Victoria's rocky reefs*. Department of Natural Resources and Environment, Melbourne, pp. 3.1-3.26.
- O'Hara, T.D. 2000. Habitats as surrogates for faunal and floral assemblages associated with rocky reefs along the Victorian coast. In Ferns, L.W. and Hough, D. (Eds) *Environmental Inventory of Victoria's Marine Ecosystems Stage 3: Understanding biodiversity representativeness of Victoria's rocky reefs*. Department of Natural Resources and Environment, Melbourne, pp. 5.1-5.40.
- O'Hara, T.D. 2000. Rare and threatened marine invertebrates. *Victorian Regional Ripples, Marine and Coastal Community Network*, 7(3), 2.
- O'Hara, T.D. 2001. Biological control of *Spartina*. *Waves*, Winter 2001.
- Pickering, M. 2000. Review of Merriman, N. (Ed) 1999. *Making Early Histories in Museums*. *Museum National*, August 2000, 32-33.
- Pickering, M. 2001. Review of Mulvaney, D.J., and Kamminga, J. (Eds) 1999. *Prehistory of Australia*. *Journal of Intercultural Studies*, 22(1), 91-93.
- Poore, G.C.B. 2000. Review of Klein, J.C. and Schram, F.R. (Eds) 2000. *The Biodiversity Crisis and Crustacea*. *Proceedings of the Fourth International Crustacea Conference, Amsterdam, The Netherlands, 20-24 July 1998, Volume 2*. *Journal of Experimental Marine Biology and Ecology* 254, 123-124.
- Rich, T.H., Vickers-Rich, P., Novas, F.E., Cuneo, P., Puerta, P. & Vacca, R. 2000. Theropods from the "Middle" Cretaceous Chubut Group of the San Jorge Sedimentary Basin, Central Patagonia. A Preliminary Note. In Perez-Moreno, B.P., et al. (Eds) *Aspects of Theropod Paleobiology, GAIA Special Volume*, 15, 111-115.
- Scorzelli, R.B., Azvedo, I.S. & Birch, W.D. 2000. Willow Grove Ni-rich ataxite: a preliminary study. *Meteoritics and Planetary Science*, 35, Supplement, A144.
- Sharples, J.P. 2000. Numismatic iconography: creating a nation or "future eating"? *Proceedings of the Melbourne Meeting of ICOMON*, pp. 112-116.
- Smith, D. 2000. Objects decorative. *Insite Museums Australia Newsletter*, October-November 2000, pp. 4-5.
- Stewart, J. & Demant, D. 2000. Technology at Melbourne Museum. *Computer Education Group of Victoria Newsletter*, November.
- Tadich, I. 2001. Children's Museum at Melbourne Museum. *Art Link - Contemporary Art Quarterly*, 2, 62.
- Van Praagh, B. & Hinkley, S. 2001. *Survey of the Giant Gippsland Earthworm, Megascolides australis, around the bottom of Loch Hill in an area potentially affected by the realignment of the South Gippsland Highway*. Report to VicRoads. 13 pp.
- Van Praagh, B.D., Hinkley, S. & Yen, A.L. 2000. *Eastern Freeway extension between Springvale Road and Ringwood flora and fauna assessment supplement No. 15. Ongoing monitoring of the butterflies within the Eastern Freeway extension: year 2000 assessment*. Report to VicRoads. 21 pp.
- Wainer, J., Neville, P. & Yen, A. 2001. *Using invertebrate biodiversity to assess habitat condition of fragmented Gippsland Red Gum forest remnants of the Gippsland Plains*. Report to Department of Natural Resources and Environment. 13 pp.
- Yen, A.L. 2000. Spineless - but they're the backbone of a healthy ecosystem. *Land for Wildlife News*, 4(6), 22.
- Yen, A.L. 2000. Biodiversity in river red gum. *The Bush Telegraph*, May-July, 7.
- Yen, A.L., Marchant, R., Van Praagh, B.D. & Hinkley, S. 2000. *Macro-invertebrates of conservation significance survey at Hazelwood Power*. Report to Hazelwood Power. 11 pp.
- Books and Book Chapters**
- Birch, W.D. 2001. Gold as a mineral. In *Gold and Civilisation Catalogue*. Art Exhibitions Australia & National Museum of Australia, pp. 23-31.
- Butler-Bowdon, E. 2000. The media star. In Armstrong, G. and Thompson, P. (Eds) *Phar Lap*. Allen & Unwin, Sydney, pp.169-177.
- Butler-Bowdon, E. 2000. Standing tall: the museum exhibit. In Armstrong, G. and Thompson, P. (Eds) *Phar Lap*. Allen & Unwin, Sydney, pp.207-209.
- Gillespie, R. & Chambers, D.W. 2000. Locality in the history of science: colonial science, technoscience and indigenous knowledge. In MacLeod, R. (Ed) *Nature and Empire: Science and the Colonial Enterprise*. *Osiris*, 2(15).
- Holloway, D.J. 2001. Trilobita. In Pickett, J.W. et al. (Eds) *Silurian palaeobiogeography of Australia*. *Memoirs of the Association of Australasian Palaeontologists*, 23, 143-145, 163-164.
- Kean, J. 2000. As soon as the cement dried. In Potter R. (Ed) *Karromarranendi: Tandanya's 10th Anniversary Exhibition*. National Aboriginal Cultural Institute, Adelaide, pp. 3-6.
- Kean, J. 2000. Entries on: Johnny Warangkula Tjupurrula, Uta Uta Tjangala, Mick Namarari Tjapaltjarri and Turkey Tolson Tjupurrula. In Kleinert, S. and Neale, M. (Eds) *Oxford Companion to Aboriginal Art and Culture*. Oxford University Press, Melbourne, pp. 654-655, 719, 721, 730.
- Kean, J. 2000. The first Pintupi outstations. In Kleinert, S. and Neale, M. (Eds) *Oxford Companion to Aboriginal Art and Culture*, Oxford University Press, Melbourne, pp. 221-225.
- Kean, J. 2000. Getting back to country: painting and the outstation movement. In *Papunya Tula: Genesis and Genius*, Art Gallery of New South Wales, pp. 216-223.
- Kean, J. 2001. Smuggling in some history. In *The Australia Projects, Federation Festival, 2001*. Melbourne Festival, Melbourne, pp. 8-11.

Kuiter, R.H. 2001. *Seahorses, Pipefishes and their Relatives: a Comprehensive Guide to the Syngnathiformes*. TMC Publishing, London, 240 pp.

MacDonald, G.F. 2001. Introduction: Prince Rupert Harbour Program. In Cybulski, J.S. (Ed) *Perspectives on Northern Northwest Coast Prehistory*, Mercury Series Archaeological Survey of Canada Paper, Canadian Museum of Civilization, Canada, 160, Pg 1-20.

Morton, J. 2000. Entries on: Aboriginal religion today; Anthropology; and, Dreaming. In Kleinert, S. and Neale, M. (Eds) *The Oxford Companion to Aboriginal Art and Culture*, Oxford University Press, Melbourne, pp. 9-16, 521-523, 577-578.

O'Hara, T.D. 2000. Victorian Province, Australia. In Sheppard, C.R.C. (Ed) *Seas at the Millennium: an Environmental Evaluation*. Pergamon, Oxford, England, pp. 661-671.

Rich, T.H. & Vickers-Rich, P. 2000. *Dinosaurs of Darkness*. Indiana University Press, Bloomington, 222 pp. (also Allen & Unwin, Sydney, 2001).

Rich, T.H., Vickers-Rich, P., Chinsamy, A., Constantine, A. & Flannery, T.F. 2000. Australia's Polar Dinosaurs. In Paul, G.S. (Ed) *The Scientific American Book of Dinosaurs*. St Martins Press, New York, pp. 323-330.

Sculthorpe, G. 2001. When whitefellas go walkabout. In Kleinert, S. and Neale, M. (Eds) *The Oxford Companion to Aboriginal Art and Culture*. Oxford University Press, Melbourne, pp. 391-397.

Sculthorpe, G. 2001. Exhibiting indigenous histories in Australian museums. In McIntyre, D. and Wehner, K. (Eds) *National Museums, Negotiating Histories*. National Museum of Australia and Centre for Crosscultural Research, Canberra, pp. 73-84.

Sharples, J.P. 2001. Chapters on: Mints; William Stanley Jevons; The Tinline Salver; The Gold Sovereign; and Gold Escorts; In *Gold and Civilisation Catalogue*. Art Exhibitions Australia & National Museum of Australia, pp. 51-61.

Willis, E. 2000. Remembering Phar Lap. In Armstrong, G. and Thompson, P. (Eds) *Phar Lap*, Allen & Unwin, Sydney, pp. 197-205.

Other

Birch, T. 2000. *Reversing the Negatives: a Portrait of Aboriginal Victoria*. Images by Ricky Maynard. Museum Victoria, Melbourne, 78 pp.

Demant, D. 2001. *The First Computer Mouse*. Illustrated by Deborah Koolen. Museum Victoria, Melbourne, 24 pp.

McCubbin, M. 2000. *Object Lessons: Public History in Melbourne, 1887-1935*. MA Thesis, The Australian Centre, University of Melbourne, 153 pp.

Museum Victoria. 2000. *Bunjilaka: the Aboriginal Centre at Melbourne Museum*. Museum Victoria, Melbourne, 64 pp.

Museum Victoria. 2001. *Melbourne Museum, Souvenir Guide*, Museum Victoria, Melbourne, 48pp.

O'Hara, T.D. 2001. *Patterns of Diversity for Subtidal Reef Assemblages of Victoria, Australia*. PhD Thesis, University of Melbourne, 193 pp.

Willoughby, E. 2001. *"Woman Making an Exhibition of Herself": Women and Art at the Exhibition of Women's Work, 1907*. MA Thesis, Monash University, 95 pp.

Lectures and Presentations

Conference Presentations

Abbott, J. 2000. Bodies and Sport. Science Teachers' Association of Victoria Conference (Bundoora, 31 November-1 December).

Birch, W. 2000. The Diamond-Sapphire-Zircon association in Victoria. 15th Australian Geological Convention (Sydney, 3-7 July).

Birch, W.D. 2001. Beechworth and St Arnaud: contrasting diamond occurrences in Victoria. 24th Annual Mineralogical Societies' Seminar (Hobart, 9-10 June).

Byrne, T. 2001. Flying Machines across the Curriculum. Department of Employment, Education and Training Early Years Conference (Melbourne, 17-18 June).

Byrne, T. 2000. The Science and Technology of Toys. Conference of the Australian Science Teachers Association (Bundoora, July).

Byrne, T. 2000. Integrating Toys in the Curriculum. Department of Employment, Education and Training Regional Middle Years Conference (Ballarat, 5 September).

Byrne, T. 2000. Integrating Toys in the Curriculum. Department of Employment, Education and Training Early Years Conference (Bundoora, 12-13 November).

Byrne, T. 2000. The Natural History of the Moon. Science Teachers' Association of Victoria Conference (Bundoora, 31 November-1 December).

Cardinal, B. 2000. Systematics of the Large Bentwing Bat (*Miniopterus schreibersii*) in Australia. Genetics Society of Australia, 47th Annual Meeting (Canberra, July).

Carroll, L. & Anderson, M. 2000. The Waves that Shaped Australia. Geography Teachers' Association Conference (Camberwell, August).

Christidis, L. & Norman, J. 2000. Genetics, systematics and the conservation of birds in Asia. 2nd Pan-Asian Ornithological Conference (Sri Linka, October).

D'Agrosa, P. 2001. Practical Astronomy. Science Teachers' Association of Victoria Conference (Parkville, 17-18 June).

D'Agrosa, P. & Byrne, T. 2000. Sundials. Annual Conference of Mathematics Association of Victoria (Clayton, 7-8 December).

Demant, D. 2000. Balancing integrity with viability: ensuring a future harvest. ICOM/CECA Conference (New Zealand, October).

Demant, D. 2001. Play Internet games: without a screen in sight. Science Teachers' Association of Victoria, Primary Teachers' Conference (Melbourne, June).

- Edmonds, P. & Wild, E. 2000. New obligations: conservation policy and treatment approaches for Aboriginal collections in the Bunjilaka Aboriginal Centre, Melbourne Museum. International Institute for Conservation Congress (Melbourne, October).
- Ferrara, P. 2001. How can Drama Teachers use the Immigration Museum. Drama Victoria Conference (Parkville, May).
- Gomon, M. 2000. Relocation of the Fish Collection and facilities at the new Melbourne Museum. National Workshop on Fish Collection Management and Taxonomy (Albury, 10 August).
- Gomon, M. 2001. Australian species of the triglid genus *Lepidotriglia*. 6th International Conference on the Systematics and Biogeography of Indo-Pacific Fishes (Durban, South Africa, 22 May).
- Henry, D.A. 2000. EMU: flightless bird or database for the new millenium? 4th International Mineralogy and Museums Conference (Melbourne, 4-7 December).
- Henry, D.A. & Brugger, J. 2000. Some recent mineral discoveries from the Ranger uranium deposits, Jabiru, N.T. 4th International Mineralogy and Museums Conference (Melbourne, 4-7 December).
- Henry, D.A. 2001. Big holes: Australian impact structures. 24th Annual Mineralogical Societies' Seminar (Hobart, 9-10 June).
- Hill, T.L. 2000. The Melbourne Planetarium. International Planetarium Society (Montreal, Canada, 10-14 July).
- Hirst, R. 2001. New museums - new buildings. Museums Australia Annual Conference (Canberra, April).
- Holloway, D. 2001. The trilobite subfamily Monorakinae (Pterygomtopidae). 3rd International Conference on Trilobites and their Relatives (Oxford, England, 2-6 April).
- Hunt, G. 2000. Economy, Environment and Ecological Sustainability. Conference of the Victorian Commercial Teachers' Association (Bundoora, 29 November).
- Hunt, G. 2000. Sixteen Million Stories - learning in Melbourne Museum. Conference of the Science Teachers' Association of Victoria (Bundoora 30 November).
- Hunt, G. 2000. Valuing the Environment. Conference of the Victorian Association of Outdoor Education, Tintern Grammar School (Ringwood, 14 July).
- Hunt, G. 2001. Hush puppies, dog droppings and environmental education. Keynote address, From the mountains to the sea; a feast of ideas and Inspiration, Tasmanian Environmental Education Conference (Hobart, 23 March).
- Jay, D. 2000. Mapping Melbourne Museum. 34th Annual Geography Teachers' Association of Victoria Conference, (Camberwell, August).
- Jay, D. 2000. Laying it Bare. Annual History Teachers' Association of Victoria Conference, Processes in History workshop (Moorabbin, November).
- Jay, D. 2000. People, Land and Law: Indigenous Histories at Melbourne Museum. Annual History Teachers' Association of Victoria Conference, workshop session (Moorabbin, November).
- Jay, D. 2000. Painting and the Outstation Movement. Papunya Tula: Genesis and Genius Symposium (Sydney, 19 August).
- Kean, J. 2001. Covering the spectrum: three new galleries of indigenous Australian culture. Museums Australia Annual Conference (Canberra, April).
- Kerridge, Y. 2000. Mapping Melbourne Museum. 34th Annual Geography Teachers' of Victoria Conference, workshop session (Camberwell, August).
- Kerridge, Y. 2000. The Golden Mile Heritage Trail. 34th Annual Geography Teachers' of Victoria Conference, workshop session (Camberwell, August).
- Kerridge, Y. 2000. Laying it Bare: Processes in History. Annual History Teachers' Association of Victoria Conference, workshop session (Moorabbin, November).
- Kerridge, Y. 2000. People, land and Law: Indigenous Histories at Melbourne Museum. Annual History Teachers' Association of Victoria Conference, workshop session (Moorabbin, November).
- Kerridge, Y. 2000. Studies of Society and Environment 1 and History 1 using the Longman text books. Annual History Teachers' Association of Victoria Conference, workshop session with Longman publishers (Moorabbin, November).
- Kerridge, Y. 2001. Pushing the boundaries: the place of art at Melbourne Museum. Museums Australia Conference (Canberra, April).
- McCubbin, M. 2000. Museum Victoria and the Local Community. Preserving the Past for the Future: Community History, Collections and Collecting Forum (Richmond, 3 September).
- McCubbin, M. 2001. The Conceptual Development of the Melbourne Exhibition. Historians in Museums Special Interest Group, Museums Australia Annual Conference (Canberra, April).
- MacDonald, G. 2001. Museums and Education in the Digital Age. Australian Education Assembly Conference (Carlton, April).
- McDonald, H. & Tence, M. 2001. Points of View: Community Voices in Museums. Museums Australia Conference (Canberra, May).
- McFadzean, M. 2000. The Glory Box: Memory and Material Culture. Life Stories and Personal Narratives Conference (Melbourne, 15-16 July).
- McFadzean, M. 2001. Museums: Social Mirrors, Social Commentators? Or Who's Telling Whose Stories? Museum 2000 Confirmation or Challenge Seminar Series (Uddevalla, Sweden, 5 April).
- Mackie, J. 2000. Colonial colonials - contrasting patterns of mitochondrial DNA variation in three introduced bryozoans suggest two different introduction histories. Genetics Society of Australia, 47th Annual Meeting (Canberra, July).

- Mackie, J. 2000. Colonial colonials - contrasting patterns of mitochondrial DNA variation in three introduced bryozoans suggest two different introduction histories. Australian Marine Sciences Association Annual Meeting (Sydney, July).
- Marchant, R. 2000. How efficient is extraction of stream insect larvae from quantitative benthic samples? 39th Congress of the Australian Society for Limnology (Darwin, July).
- Meehan, C. 2000. Buying wisely - consultants and cultural institutions. Museums Australia Conference (Canberra, April).
- Meehan, C. 2000. What price evaluation? Museums Australia Conference (Canberra, April).
- Meehan, C. 2000. What should be at Melbourne Museum is... Museums Australia Conference (Canberra, April).
- Moore, G. 2000. Museum Victoria's Bioinformatics Website. Australasian Computers in Education Conference (Melbourne 7 July).
- Moore, G. 2000. Biodiversity at Melbourne Museum. Science Teachers' Association of Victoria Conference (Bundoora, 31 November-1 December).
- Moore, G. 2001. Biodiversity at Melbourne Museum. Science Teachers' Association of Victoria Biology Teachers' Conference (Clayton, 16 February).
- Moore, G. 2001. Dinosaurs in the Curriculum. Science Teachers' Association of Victoria Primary Science Teachers' Conference (Parkville, 18 June).
- Moverley, J. 2000. Health assessment of southeastern Australian estuaries using benthic macrofauna. Bass Strait Forum 2000 (Launceston, November).
- Moverley, J., Heislars, S., Coleman, N. & Gason, A. 2000. Diversity of coastal Victorian macrobenthos. Bass Strait Forum 2000 (Launceston, November).
- O'Hara, T. 2000. Towards a marine protected area system for Bass Strait. Bass Strait Forum 2000 (Launceston, November).
- O'Hara, T. 2000. Biodiversity surrogates for Victorian marine habitats. Annual Meeting of Ecological Society of Australia (Melbourne, November).
- Pentland, P. 2000. Sporty sciences. Conference of the Australian Science Teachers' Association (Perth, July).
- Pentland, P. 2000. Natural Disasters and Earth Science Activities. Science Teachers' Association of Victoria Conference (Bundoora, 31 November - 1 December).
- Pentland, P. 2000. Forces and Energy in Sport. Science Teachers' Association of Victoria Conference (Bundoora, 31 November - 1 December).
- Pentland, P. Simple Machines. Science Teachers' Association of Victoria Conference (Bundoora, 31 November - 1 December).
- Pentland, P. & Stoyles, P. 2000. Party Time Science. Science Teachers' Association of Victoria Conference (Bundoora, 31 November - 1 December).
- Rich, T. 2000. The Garden of Eden Hypothesis. 15th Australian Geological Congress (Sydney, 5 July).
- Sandford, A.C. 2001. A revision of Nephranomma (Phacopidae), with new species from Victoria. 3rd International Conference on Trilobites and their Relatives (Oxford, England, 2-6 April).
- Sandford, A.C. 2001. Homalonotid trilobites from the Silurian and Early Devonian of southeastern Australia and New Zealand. 3rd International Conference on Trilobites and their Relatives (Oxford, England, 2-6 April).
- Sculthorpe, G. 2000. Indigenous issues for museums. ATSIIC Conference on Art for Money's Sake: Protecting the Cultural Rights of Indigenous Arts (Melbourne, July).
- Sculthorpe, G. 2000. Reconciling Aboriginal and Western Values of Place in Australia. International Symposium on Cultural Heritage and Diversity (Tokyo, Japan, December).
- Sculthorpe, G. 2001. Developing Exhibitions in Bunjilaka. Museums Australia Annual Conference (Canberra, April).
- Stewart, J. 2000. Museum Victoria on-line. Australian Computer Education National Conference (Melbourne, July).
- Stewart, J. & Demant, D. 2000. Digital technology. Australian Computer Education National Conference (Melbourne, July).
- Stewart, J. 2000. Education on-line. Computing in Education Conference (Ballarat, July).
- Stewart, J. 2000. Towards a sustainable future. 34th Annual Geography Teachers' Association of Victoria Conference, (Camberwell, August).
- Stewart, J. 2000. Museum on-line. Gippsland Learning Technologies Conference (Moe, September).
- Stewart, J. 2000. Learning with objects. Science Teachers' Association of Victoria Annual Conference, (Bundoora, 31 November-1 December).
- Stewart, J. & Demant, D. 2000. Internet games without a screen. Science Teachers' Association of Victoria Annual Conference (Bundoora, 31 November-1 December).
- Stewart, J. 2001. Learning with the Melbourne Museum collections. Primary Science Teachers' Conference (Parkville, June).
- Stewart, J. & Demant, D. 2001. Chips or paper tape - it doesn't matter to a computer. Australian Institute of Physics Teachers' Conference (Clayton, February).
- Stewart, J. & Demant, D. 2001. Internet games without a screen. Primary Science Teachers' Conference (Parkville, June).
- Stewart, J. & Marlow, J. 2001. Museum Victoria on-line. Computing in Education Conference (Ballarat, June).
- Tadich, I. 2001. Family Learning. Museums Australia Annual Conference. (Canberra, April).

Walker, K. 2000. Public interactions with Museum Victoria's legacy database sets. US NFS - Australian Interaction on Bioinformatics Workshop (Washington DC, USA, 10-14 July).

Wholley, A. 2000. Federation's Child: the roles of real children and children's images in Federation. Australian Historical Association Conference (Adelaide, 5-9 July).

Wilson, R. 2001. Biogeographic data and Earth history. International Workshop on Global Wrench Tectonics. (Oslo, Norway, 9-11 May).

Lectures

Allen, L. 2000. The Hermannsburg story: watercolour artists painting in the Namatjira style. Fine Arts, University of Melbourne (11 August).

Allen, L. 2001. Aboriginal art at Melbourne Museum. Fine Arts, University of Melbourne (March).

Allen, L. 2001. Aboriginal representation in the Belonging to Country exhibition. Anthropology, La Trobe University (18 May).

Butler-Bowdon, E. & McFadzean, M. 2001. Social diversity in the Australia Gallery exhibitions. Museum Studies, Deakin University (Melbourne, 19 March).

Caple, S. 2000. Phylogeography of the Noisy Miner *Manorina melanoccephala* throughout eastern Australia. Biological & Chemical Sciences, Deakin University (31 October).

Caple, S. 2001. Comparative phylogeography of birds in south-eastern Australia. Genetics, University of Melbourne (4 June).

Cardinal, B. 2001. Population genetics of bats and flies. Genetics, University of Melbourne (29 March 2001).

Cardinal, B. 2001. Phylogeography of *Miniapterus* species. Biological & Chemical Sciences, Deakin University (30 March).

Cardinal, B. 2001. Bats and Genetics. Dame Margaret Blackwood Soroptimists (Melbourne, 31 March).

Christidis, L. 2000. Lectures on: Molecular data and phylogenetic trees; Molecular phylogenetic methods; Comparative phylogeography. Genetics, University of Melbourne (October).

Churchward, M. & Riddett, R. 2000. Down by the Falls: the history and conservation of Dight's Mill, Collingwood. Institution of Engineers Australia, Heritage Branch (Melbourne, 14 September).

Demant, D. 2000. Play Internet games: without a screen in sight. Science Teachers' Association of Victoria (Melbourne, November).

Demant, D. 2001. Learning on the periphery. Computer Science, University of Melbourne (8 May).

Gomon, M. 2000. Ichthyological research and the development of Public Program projects for Melbourne Museum. Marine Research Group of Victoria (Melbourne, November) and, Australia and New Guinea Native Fishes Association (Melbourne, December).

Henry, D.A. 2000. The Geology Collections of Museum Victoria. Mineralogical Society of Victoria (Melbourne, 5 July).

Henry, D.A. 2000. The Ranger uranium mine. Waverley Gem and Mineral Club (Melbourne, 10 October).

Hill, T.L. 2000. Monsters in galaxies. Astronomical Society of Frankston (Melbourne, August).

Hill, T.L. 2000. Staburst or Seyfert? Probing the energy sources of active galaxies. Astrophysics Group, University of Melbourne (August).

Hill, T.L. 2000. Experiences as a female astronomer. Women in Physics Workshop, (Parkville, September).

Hill, T.L. 2000. Monsters in galaxies. Astronomical Society of Victoria (Melbourne, November).

Hill, T.L. 2001. Life as an astronomer. Zonta International, Western Region (Melbourne, March).

Hinkley, S. 2000. Box ironbark ecology. Puckapunyal Army Base (Victoria, 28 October-2 November).

Hirst, R. 2001. A decade of change in Museum Victoria. Leadership Victoria (Spotswood, 20 June).

Hiscock, R. 2000. Launching Melbourne Museum. Victorian College of the Arts Tourism and Marketing Course, (Carlton, 15 August).

Hobbs, S. 2001. Public Relations in Museum Victoria. Deakin University Museum Studies post-graduate course, (Melbourne Museum, May).

Horvath, A. 2001. The Human Mind and Body Gallery at Melbourne Museum. Templestowe Probus Group (10 May).

Hunt, G. 2001. Directions for environmental education. Greening Australia (Victoria) forum - Future of Environmental Community Education (Heidelberg, 18 May).

Hunt, G. 2001. 16 Million Stories - learning through objects at Melbourne Museum, Australian Education Assembly (Melbourne, 20 July).

Kean, J. 2000. Karromarranendi Tandanya's 10th anniversary exhibition. National Aboriginal Cultural Institute (Adelaide, 3 December).

Kerridge, Y. 2000. Learning Through Objects and Ways of Seeing. Workshop sessions for Melbourne Museum volunteers, students and general public (Carlton, August - October).

Kerridge, Y. 2001. Gold and Civilisations. Joint presentation for primary and secondary teachers with Sovereign Hill, Minerals Victoria, Old Melbourne Gaol, and the Gold Treasury Museum (Carlton, July).

Kinsey, F. 2001. The CSIRAC computer and the processes involved in developing the Museum's CSIRAC exhibition. Computer Science, University of Melbourne (8 May).

McFadzean, M. 2001. Development of Melbourne Museum. Museum of Scotland (Edinburgh, 7 September).

- McFadzean, M. 2001. Representing cultural diversity in Australian museums. Goteborg University (Sweden, 3 April).
- McPhee, C. 2000. Spiders. Urban pest control. Northern Metropolitan Institute of TAFE (Melbourne, October).
- Marchant, R. 2000. Secondary production of freshwater invertebrates. Freshwater Ecology, Monash University (August).
- Marchant, R. 2001. Multivariate statistics. Biology, Victoria University of Technology (May).
- Meehan, C. 2000. Touring exhibitions - making and measuring audience impact. Museums Australia Workshop (Melbourne, August).
- Meehan, C & Ferguson, F. 2000. Describing audiences. Museums Australia Workshop (Melbourne, August).
- Moore, G. 2001. Fabulous Fossils. Science Teachers' Association of Victoria Schools Day/National Science Week (Werribee, 7 May).
- Moore, G. 2001. Dinosaurs and Fossils. Melbourne Museum Professional Development for Teachers (Carlton, 22 May).
- Murray, S. 2001. The phylogenetic approach to comparative biology and its application to the study of Gerygone. Genetics, University of Melbourne (10 May).
- Neville, P. 2001. Invertebrates as indicators of forest plantations. West Gippsland Landcare Group (March).
- O'Hara, T. 2001. Victorian marine biodiversity. Friends of National Parks Conference, (Tidal River, Victoria, 1 April).
- O'Hara, T. 2001. Patterns of diversity for subtidal reef assemblages of Victoria, Australia. Zoology, University of Melbourne (Parkville, 2 May).
- Osborne, M. 2000. Molecular evolution of possums. Genetics, La Trobe University (Bundoora, 27 October).
- Pentland, P. 2001. Forces and energy activities. Science, University of Melbourne. (Parkville, 10 April).
- Pickering, M. 2001. Hunter-gatherer settlement patterns in a subhumid to semi-arid environment. Southern Illinois University, Carbondale, Illinois, USA. (delivered in absentia, March).
- Pickering, M. 2001. On Aboriginal cannibalism: a critical review of the literary evidence. Archaeological and Anthropological Society of Victoria (Parkville, March).
- Pickering, M. 2001. Exhibitions in Bunjilaka. History, Monash University (Clayton, March).
- Poore, G. 2001. Marine biodiversity downunder. Zoological Museum and Institute, University of Hamburg (Germany, 3 April).
- Rich, T. 2000. A career in vertebrate palaeontology. St Leonards College, (Brighton, Victoria, 28 July).
- Rich, T. 2001. Victorian Early Cretaceous Polar Dinosaurs and the Associated Fauna. (Carnegie Museum, Pittsburgh, Pennsylvania; University of Alaska, Anchorage, USA; National Science Museum, Tokyo, January).
- Rourke, M. 2001. Gene genealogy and gene flow in the White-browed Babbler, *Pomatostomus superciliosus*. Biological & Chemical Sciences, Deakin University (Geelong, 19 April).
- Sculthorpe, G. 2000. Changes in Museum Victoria's approach to indigenous issues. Australian Academy of Sciences, (Melbourne, November).
- Sebastian, P. 2000. Immigration Museum: the challenges of working with culturally diverse communities. Museum of London (London, UK, July).
- Weis, N. 2001. The Mind and Body Gallery at Melbourne Museum. Knox Probus Group (Knox, February).
- Walker, K. 2000. Bioinformatics at Museum Victoria. USA/Australian Bilateral Biological Informatics seminar series, (Virginia, USA, July).
- Willis, E. 2000. Presenting Little Lon: an introduction to the Australia Gallery. History, University of Melbourne (Parkville, 17 October).
- Willis, E. 2001. The history of the treatment of clients with psychiatric illnesses in Victoria. Social Work, RMIT University (Melbourne, 26 April).
- Willis, E. 2001. What is the value of the past? St Judes Anglican Church (Carlton, 17 May).
- Yen, A. 2001. Introduction to invertebrates. South Gippsland Secondary College (Foster, Victoria, May).
- Yen, A. 2001. Lectures on: Introducing Museum Victoria; and, Invertebrate Survey: invertebrate ecology at the museum. National Museum of Natural Science (Taiwan, April).
- Yen, A. 2001. Invertebrate survey for conservation and land management. Entomology, National Chung Hsing University (Taiwan, April).
- Yen, A. 2001. Lectures on: Introducing Museum Victoria and bioinformatics; and, Applied environmental research: the box-ironbark forest project. Shanghai Museum of Natural History (China, April).

Graduate and Post-graduate supervision

The following honours and post-graduate students were supervised by Museum Victoria staff:

Butcher, Rhonda – Monash University, PhD. Project – Invertebrate conservation in wetlands in western Victoria.

Caple, Sarah – Department of Biological and Chemical Sciences, Deakin University, BSc(Hons). Project – Phylogeography of the Noisy Miner *Manorina melanocephala* throughout southeastern Australia.

Caple, Sarah – University of Melbourne, PhD. Project – The role of intrinsic (biological) and extrinsic (environmental) factors in determining patterns of genetic diversity and population structure in birds of south-east Australia.

Cardinal, Belinda – University of Melbourne, PhD. Project – Phylogeography of the Large Bentwing Bat *Miniopterus schreibersii*.

Cohn, Helen – University of Melbourne, PhD. Project – Novelty to rarity: a history of the National Herbarium of Victoria.

Constantine, Andrew – Monash University, PhD.
Project – Sedimentology, stratigraphy and palaeoenvironment of the Upper Jurassic-Lower Cretaceous non-marine Strzelecki Group, Gippsland Basin, southeastern Australia.

Finlay, Kyla – Monash University, PhD.
Project – Revision of two genera of Leptophlebiid mayflies.

Harding, Lucy – University of Melbourne, PhD.
Project – Early Pliocene molluscan palaeontology and palaeoenvironments of the Marine Plain Area (Antarctica).

Kefford, Ben – RMIT University, PhD.
Project – The role of salinity in structuring stream invertebrate communities.

King, Rachael – University of Melbourne, PhD.
Project – The systematics, evolution and biogeography of the Arcturidae (Crustacea, Isopoda).

Lockett, Matthew – University of Technology, Sydney, PhD.
Project – Comparative biology of introduced gobies in Sydney and Melbourne estuaries.

McDiarmid, Huon – Department of Zoology, University of Melbourne, BSc(Hons).
Project – The ecology of polydorids, polychaete worms that bore holes into abalone shells in Victoria.

MacDonald, Anna – Department of History, University of Melbourne, MA.
Project – Seeing Melbourne: the Centennial International Exhibition of the Cyclorama of Early Melbourne.

Mackie, Joshua – University of Melbourne, PhD.
Project – Genetic analysis of dispersal in bryozoans.

Maroske, Sara – University of Melbourne, PhD.
Project – Science by correspondence: Ferdinand Mueller (1825-1896).

Merrin, Kelly – Department of Zoology, University of Melbourne, BSc(Hons).
Project – Ischnomesidae (Crustacea: Isopoda: Asellota) of southeastern Australia, and their relationship to members of this deep-sea family worldwide.

Murray, Sandra – Department of Zoology, University of Melbourne, BSc(Hons).
Project – Phylogenetic relationships in *Gerygone* and the evolution of key morphological, ecological and behavioural traits within the genus.

O'Hara, Timothy – University of Melbourne, PhD.
Project – Patterns of diversity for subtidal reef assemblages of Victoria, Australia.

Osborne, Megan – La Trobe University, PhD.
Project – Molecular evolution of possums.

Raadik, Tarmo – University of Canberra, PhD.
Project – Conservation biology and systematics of the mountain *Galaxias*.

Rourke, Meaghan – Department of Biological and Chemical Sciences, Deakin University, BSc(Hons).
Project – Population genetic structure and patterns of gene flow in the White-browed Babbler *Pomatostomus superciliosus*.

Sandford, Andrew – University of Melbourne, PhD.
Project – Early Devonian trilobite faunas and depositional environments in central Victoria.

Sparks, Kathryn – Zoology Department, La Trobe University, BSc(Hons).
Project – Bionomics of the *Lasioglossum (Parasphecodes) olgae* Rayment (Hymenoptera, Halictidae), a facultatively social halictine bee.

Storey, Melissa – University of Melbourne, PhD.
Project – Systematics and biogeography of the isopod family Serolidae (Crustacea).

Taylor, Joanne – University of Melbourne, PhD.
Project – Systematics and biogeography of the amphipod family Phoxocephalidae (Crustacea).

Tsyrlin, Edward – Monash University, PhD.
Project – Revision of two genera of Gripopterygid stoneflies.

Walker-Smith, Genefer – University of Melbourne, PhD.
Project – Harpacticoida (Copepoda) of Port Phillip Bay and their utilisation by post-settlement King George Whiting.

Consultancies

Museum Victoria commissioned a total of 10 consultancies throughout the year for a sum of \$278,000. Each of the consultancies was valued at less than \$100,000.

Freedom of Information

The *Freedom of Information Act 1982* enables members of the public to obtain information held by Museum Victoria. The Chief Executive Officer is the principal officer for the purpose of administering the requirements of the Act. Initial requests for documents under the Freedom of Information legislation must be made in writing to the delegated officer: Manager, Information and Records. Requests and responses must comply with the provisions of the Act.

There were no applications under Freedom of Information for access to documents this year. As required, monthly status reports were submitted to the Department of Premier and Cabinet. *Museum Victoria Procedures for Managing Applications under the Freedom of Information Act 1982* were developed and endorsed by the Executive Management Team.

Legislative Changes

There were no significant legislative changes relating to the operations of Museum Victoria campuses.

Availability of Additional Information

The following information relating to Museum Victoria, relevant to the financial year, has been prepared and is available to the Minister, Members of Parliament and the public on request.

- Declarations of pecuniary interests duly completed by all relevant officers.
- Details of shares held by a senior officer as nominee or held beneficially in a statutory authority or subsidiary.
- Details of publications produced by Museum Victoria about the Museum, and the places where publications can be obtained.
- Details of changes in prices, fees, charges, rates and levies charged by Museum Victoria.
- Details of major research and development activities undertaken by Museum Victoria.
- Details of overseas visits undertaken including a summary of the objectives and outcomes of each visit.
- Details of major promotional, public relations and marketing activities undertaken by Museum Victoria to develop community awareness of the Museum and the services it provides.

- Details of assessments and measures undertaken to improve the occupational health and safety of employees.
- A general statement on industrial relations within Museum Victoria and details of time loss through industrial accidents and disputes.
- A list of major committees sponsored by Museum Victoria, the purpose of each committee and the extent to which the purposes have been achieved.

National Competition Policy

Museum Victoria is committed to competitive neutrality principles ensuring fair and open competition. Many non-core activities, such as cleaning, food and beverage services, security, design, exhibition construction, car park management, facilities and events management have been outsourced.

Building and Maintenance Compliance

Compliance with building and maintenance provisions of the *Building Essential Services Act 1994*.

Building Works (over \$50,000)

Scienceworks Museum

Fire service upgrade to comply with the *Building Essential Services Act 1994*.

Minor Works (under \$50,000)

Scienceworks Museum

Urgent and essential works program to comply with the *Building Essential Services Act 1994*. Risk Management works towards purchase of land from Melbourne Water.

Immigration Museum

Urgent and essential works program to comply with the *Building Essential Services Act 1994*.

22 William Street

Premises maintained to comply with lease conditions and the *Building Essential Services Act 1994*.

Royal Exhibition Building - Earth Sciences

Area maintained to comply with the *Building Essential Services Act 1994*.

Royal Exhibition Building - Great Hall

Area maintained to comply with the *Building Essential Services Act 1994*.

Abbotsford Annexe

Premises maintained to comply with the *Building Essential Services Act 1994*.

Moreland Annexe

Works program to provide safe access to elevated plant and equipment installations. Minor works program to improve safe operation of the main loading dock. Premises maintained to comply with the *Building Essential Services Act 1994*.