



Memoirs of Museum Victoria

Volume 60 Issue 1 2003

Special issue **Biology of the Anomura**

R. Lemaitre and C.C. Tudge (editors)

Proceedings of a symposium at the Fifth International Crustacean Congress,
Melbourne, Australia, 9–13 July 2001

- 1 > Biology of the Anomura – foreword to this special issue
R. Lemaitre and C.C. Tudge
- 3 > Neurobiology of the Anomura: Paguroidea, Galatheoidea and Hippoidea
D.H. Paul
- 13 > Terrestrial adaptations in the Anomura (Crustacea: Decapoda)
P. Greenaway
- 27 > Marine hermit crabs as indicators of freshwater inundation on tropical shores
S.G. Dunbar, M. Coates and A. Kay
- 35 > Hermit crab population ecology on a shallow coral reef (Bailey's Cay, Roatan, Honduras): octopus predation and hermit crab shell use
S.L. Gilchrist
- 45 > Population dynamics and epibiont associations of hermit crabs (Crustacea: Decapoda: Paguroidea) on Dog Island, Florida
F. Sandford
- 53 > The morphology of cardiac and pyloric foregut of *Aegla platensis* Schmitt (Crustacea: Anomura: Aeglidae)
T.S. Castro and G. Bond-Buckup
- 59 > Circadian and seasonal variations of the metabolism of carbohydrates in *Aegla ligulata* (Crustacea: Anomura: Aeglidae)
G.T. Oliveira, F.A. Fernandes, G. Bond-Buckup, A.A. Bueno and R.S.M. Silva
- 63 > Endemic and enigmatic: the reproductive biology of *Aegla* (Crustacea: Anomura: Aeglidae) with observations on sperm structure
C.C. Tudge

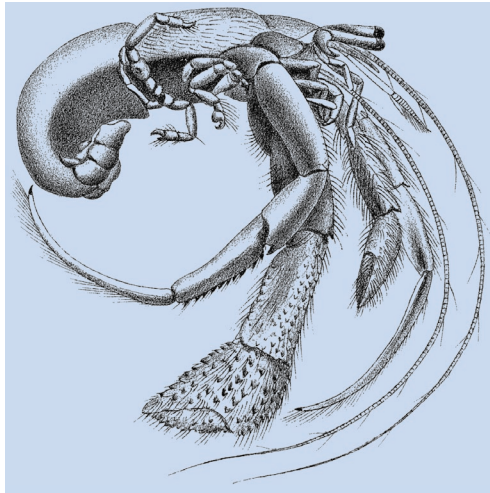
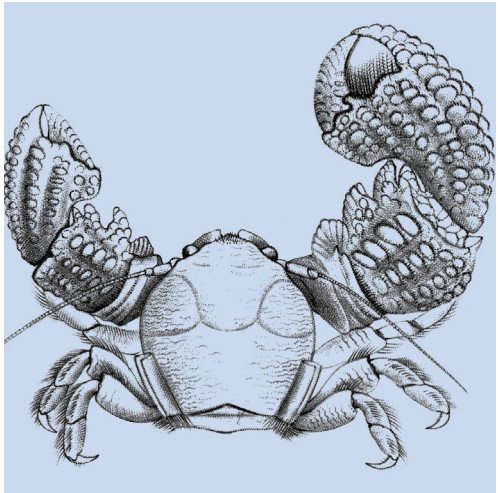
Contents

Continued inside back cover >

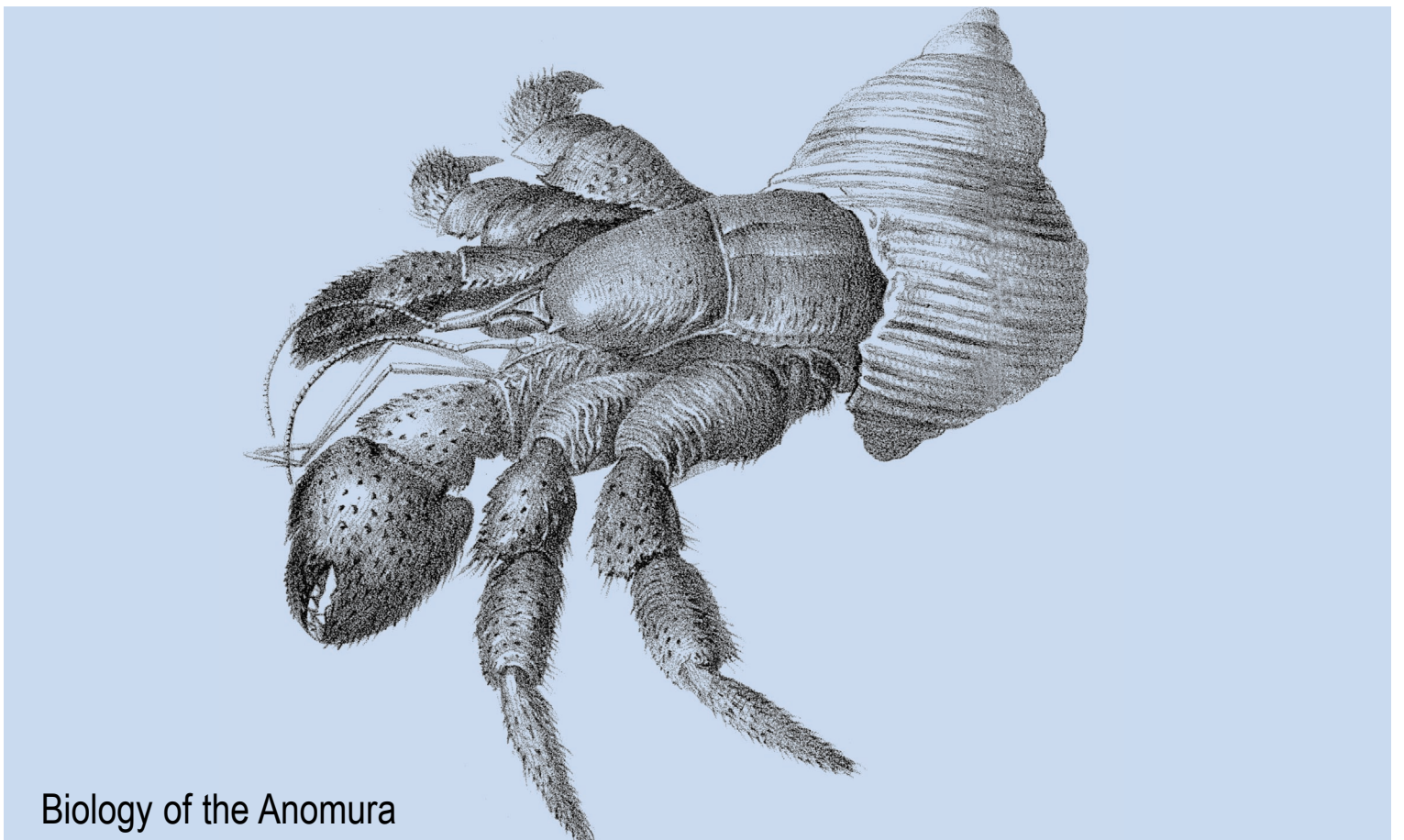
Memoirs of Museum Victoria

Volume 60 Number 1

31 January 2003



museum
VICTORIA



Biology of the Anomura

Front cover illustrations. Top left: Porcellanidae *Pachycheles monilifer* (Dana, 1852) from Dana (1852: pl. 26 fig. 23, figured as *Porcellana monilifera*).

Top centre: Parapaguridae *Paragiopagurus pilimanus* (A. Milne-Edwards, 1880) from A. Milne-Edwards and Bouvier (1893: pl. 5 fig. 8, figured as *Sympagurus pilimanus*).

Bottom: Coenobitidae *Coenobita spinosus* H. Milne Edwards, 1837 from Hess (1865: pl. 7 fig. 16, figured as *Birgus hirsutus*).

Back cover illustration. Lomisidae *Lomis hirta* (Lamarck, 1818) from Hess (1865: pl. 7 fig. 15).

Dana, J.D. 1852. Crustacea, part I. *United States Exploring Expedition, during the years 1838, 1839, 1840, 1841, 1842, under the command of Charles Wilkes, U.S.N.* 13: 1–685. Atlas (1855): 1–27, pls 1–96.

Hess, W. 1865. Beiträge zur Kenntniss der Decapoden-Krebse Ost-Australiens. *Archiv für Naturgeschichte* 31: 127–173.

Milne-Edwards, A., and Bouvier, E.-L. 1893. Reports on the results of dredging, under the supervision of Alexander Agassiz, in the Gulf of Mexico, and in the Caribbean Sea, 1877, 78, 79, by the United States Coast Survey steamer “*Blake*”, Lieut.-Commander C.D. Sigsbee, U.S.N., and Commander J.R. Bartlett, U.S.N., commanding. 32. Description des Crustacés de la famille des Paguriens recueillis pendant l'expédition. *Memoirs of the Museum of Comparative Zoology, Harvard College* 14(3): 1–172.

- 71 > A worldwide list of hermit crabs and their relatives (Anomura: Paguroidea) reported as hosts of Isopoda Bopyridae
J.C. Markham
- 79 > Geographic and distributional patterns of western Atlantic Porcellanidae (Crustacea: Decapoda: Anomura), with an updated list of species
B. Werding, A. Hiller and R. Lemaitre
- 87 > A checklist of marine anomurans (Crustacea: Decapoda) of Pakistan, northern Arabian Sea
F.A. Siddiqui and Q.B. Kazmi
- 91 > *Calcinus* hermit crabs from Easter Island, with biogeographic considerations (Crustacea: Anomura: Diogenidae)
J. Poupin, C.B. Boyko and G.L. Guzmán
- 99 > Hermit crab species of the genus *Clibanarius* (Crustacea: Decapoda: Diogenidae) from mangrove habitats in Papua, Indonesia, with description of a new species
D.L. Rahayu
- 105 > A new genus and species of hermit crab (Crustacea: Anomura: Paguridae) from Taiwan
R. Lemaitre
- 111 > Illustrated keys to families and genera of the superfamily Paguroidea (Crustacea: Decapoda: Anomura), with diagnoses of genera of Paguridae
P.A. McLaughlin
- 145 > A new theoretical approach for the study of monophyly of the Brachyura (Crustacea: Decapoda) and its impact on the Anomura
M. Tavares